

HNRAO Observing Log
40.673181 N – 80.437885 W
EN90sq



Date: 10 March 2017

Object: Jupiter – Non-Io-B

Observer: Unattended

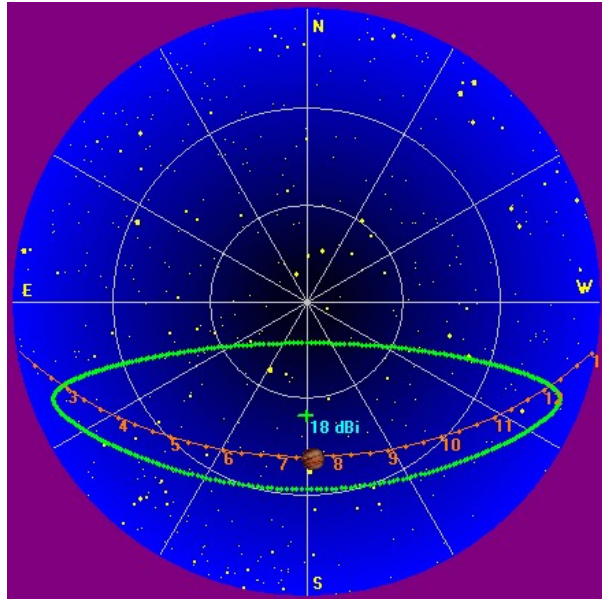
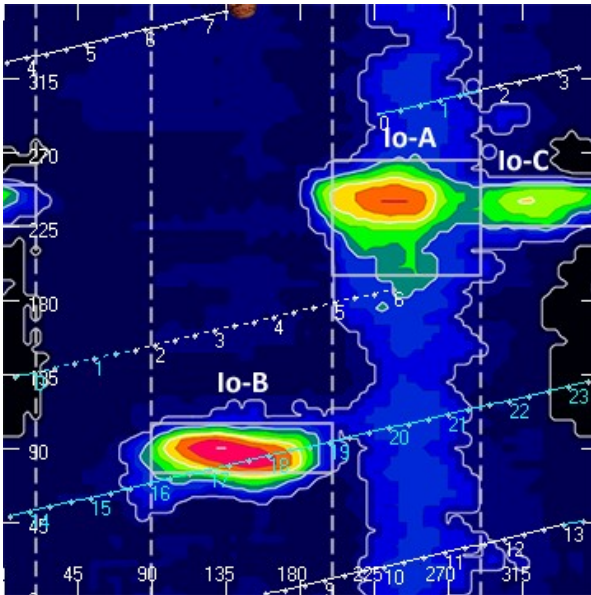
Start of pass:	0738 UT	Planetary K-index:	
Jupiter Altitude:	42.4 degrees	Jupiter Azimuth:	182.5 degrees
Jupiter CML:	145.41	Jupiter Io Phase:	358.41
Jupiter RA:	13:22	Jupiter Dec:	-06:56
Hour Angle:	00:07	Polarization	RCP
Sun Altitude:	-43.3 degrees	Sun Azimuth:	-48.7 degrees
Sun RA:	23:16	Sun Dec:	-04:44

End of pass:	0743 UT		
Jupiter Altitude:	42.3 degrees	Jupiter Azimuth:	184.1 degrees
Jupiter CML:	148.44	Jupiter Io Phase	359.11
Hour Angle:	00:12		
Sun Altitude:	-42.6 degrees	Sun Azimuth:	050.1 degrees

Observations made using:

1. FSX-8S fed by the TFD array
 - a. 7.7 dB loss between TFD and Multicouplers.
 - b. Connect to array through HNRAO Multicoupler #1 and #2, port 2
 - i. HNRAO Multicoupler #1 – TFD/LCP
 - ii. HNRAO Multicoupler #2 – TFD/RCP
 1. Port 1 having 10 dB of gain, all other ports have 3 dB gain.
2. FSX-2 fed by the LWA array directly
 - a. LWA element configuration – 90 degrees
3. JOVE 2 receiver fed by phased JOVE dipoles @ 10'
 - a. 12' phase cable - phased for 2016-17 season
 - b. Calibrated 6 March 2017
 - c. Connected to dipoles through HNRAO Multicoupler #3, port 1.
 - i. 3.165 dB loss between Multicoupler and dipoles.
4. Icom R75 receiver fed by experimental DDRR antenna directly.
 - a. Calibrated 6 March 2017
5. SDRPlay
 - a. RSP1 and RSP2

HNRAO Observing Log
40.673181 N – 80.437885 W
EN90sq



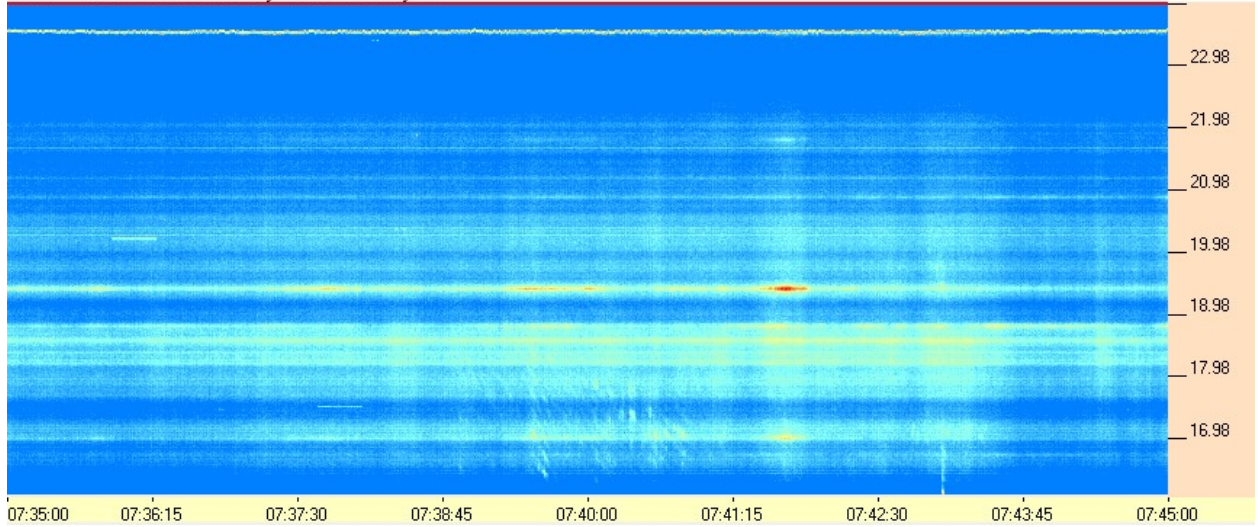
Beginning of Pass
End of Pass

A brief, most likely, Non-Io-B, RCP L-burst emission lasting about 5 minutes as seen from this observatory. Spanning 15 to 19 MHz, modulation lanes were present with a negative drift rate of -55 kHz/sec. There was insufficient emission to determine if it was an early or late vertex.

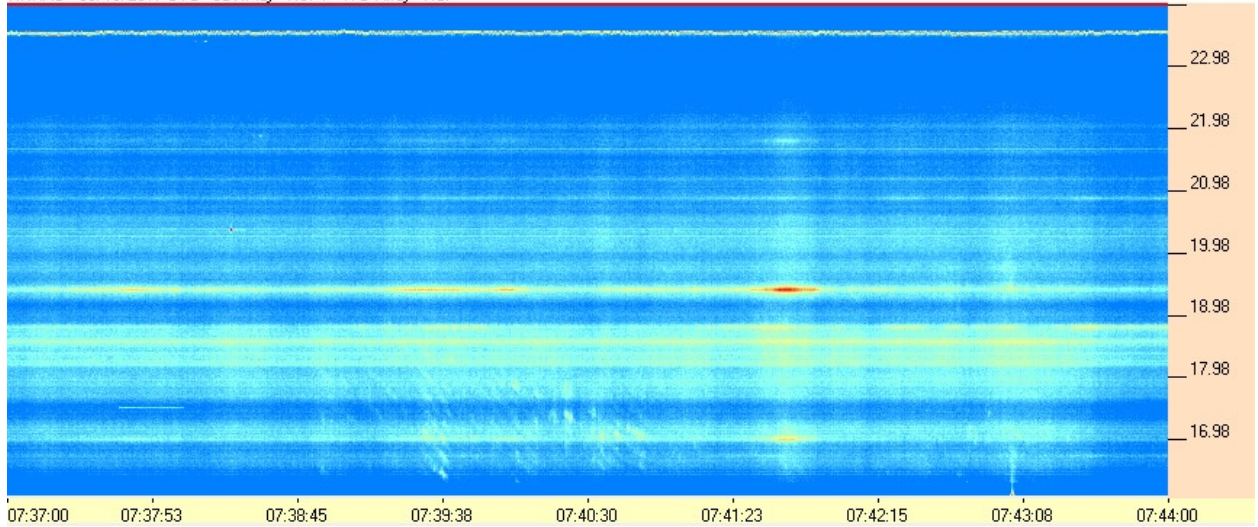
HNRAO Observing Log
40.673181 N – 80.437885 W
EN90sq



HNRAO - 03/10/2017 UTC - SDRPlay - RSP1 - TFD Array - RCP



HNRAO - 03/10/2017 UTC - SDRPlay - RSP1 - TFD Array - RCP



HNRAO Observing Log
40.673181 N – 80.437885 W
EN90sq



HNRAO - 03/10/2017 UTC - SDRPlay - RSP1 - TFD Array - RCP

