

Subject: [radiojove-data] 19-20 May 2016 Io-A + non-Io-A

From: Dave Typinski <davetyp@typnet.net>

Date: 05/30/2016 07:14

To: RadioJove-Data <radiojove-data@lists.nasa.gov>

Here's some Io-A and non-Io-A from around midnight UTC on 5/19 to 5/20.

RCP dominant L bursting 2237-0043 UTC from 16 to 24 MHz, negative drift emission envelopes.

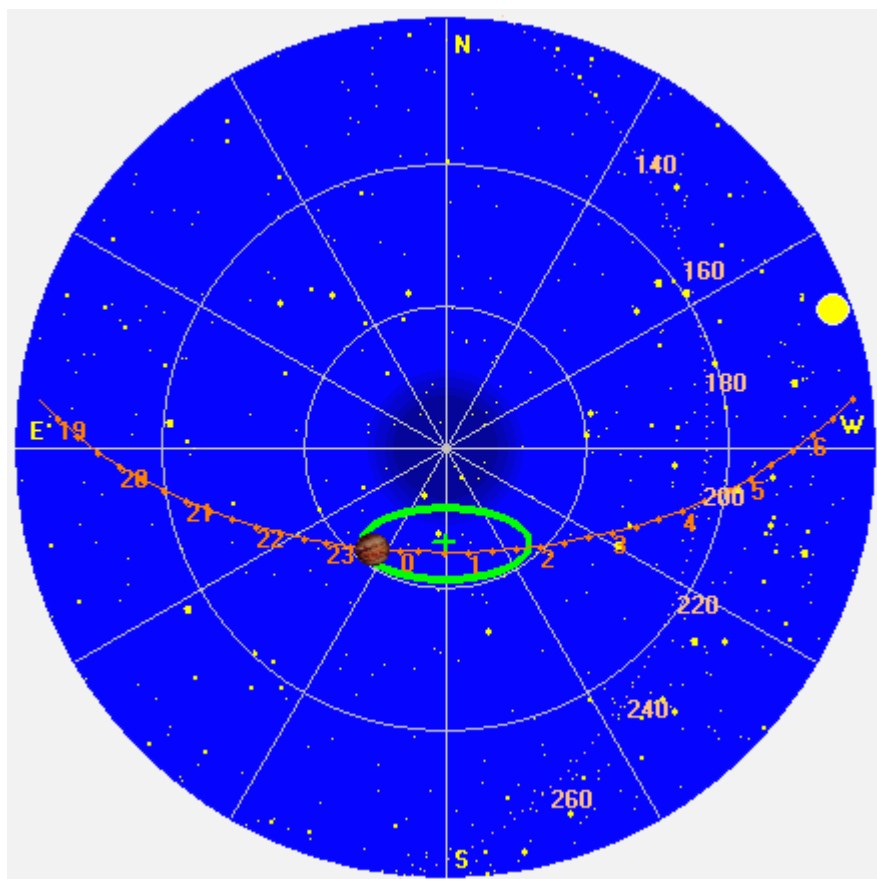
Jupiter was -31° to $+2^\circ$ off axis.

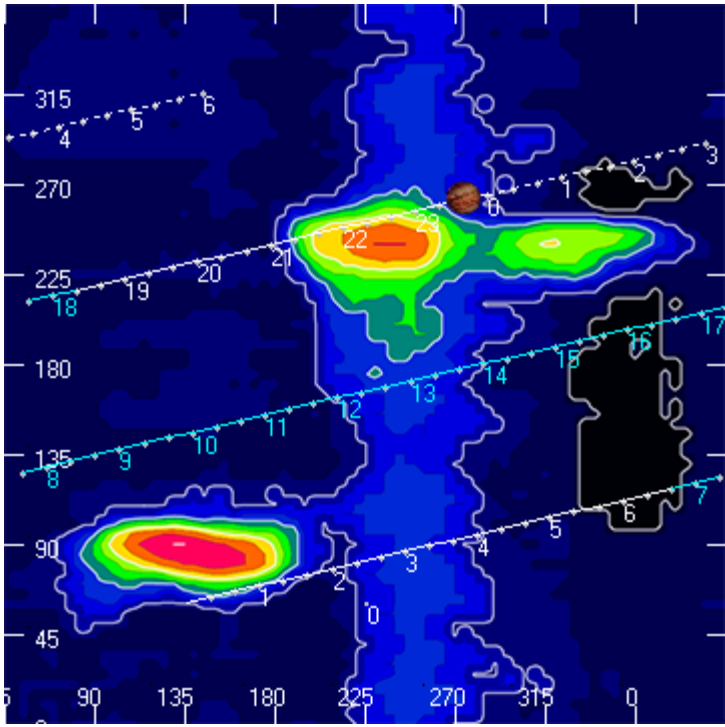
Jupiter was trailing the Sun by 104° .

--

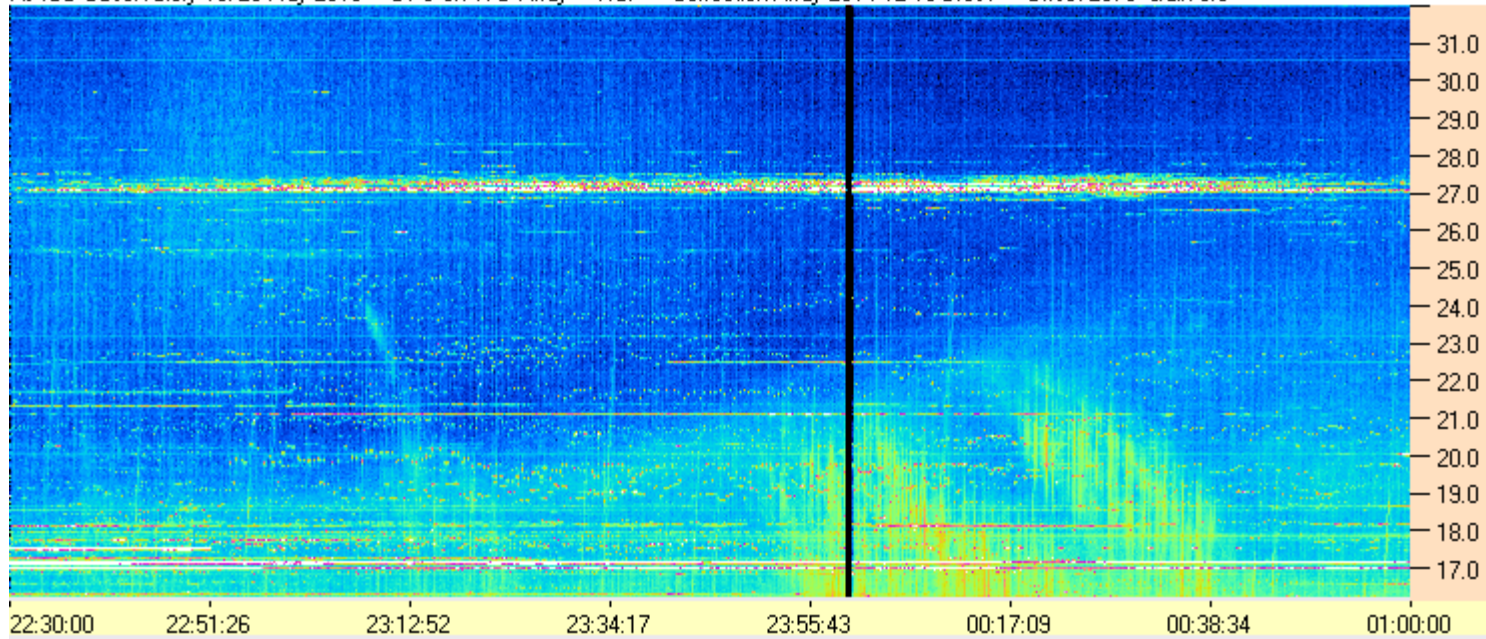
Dave

AJ4CO Observatory 19/20 May 2016, log entry 717

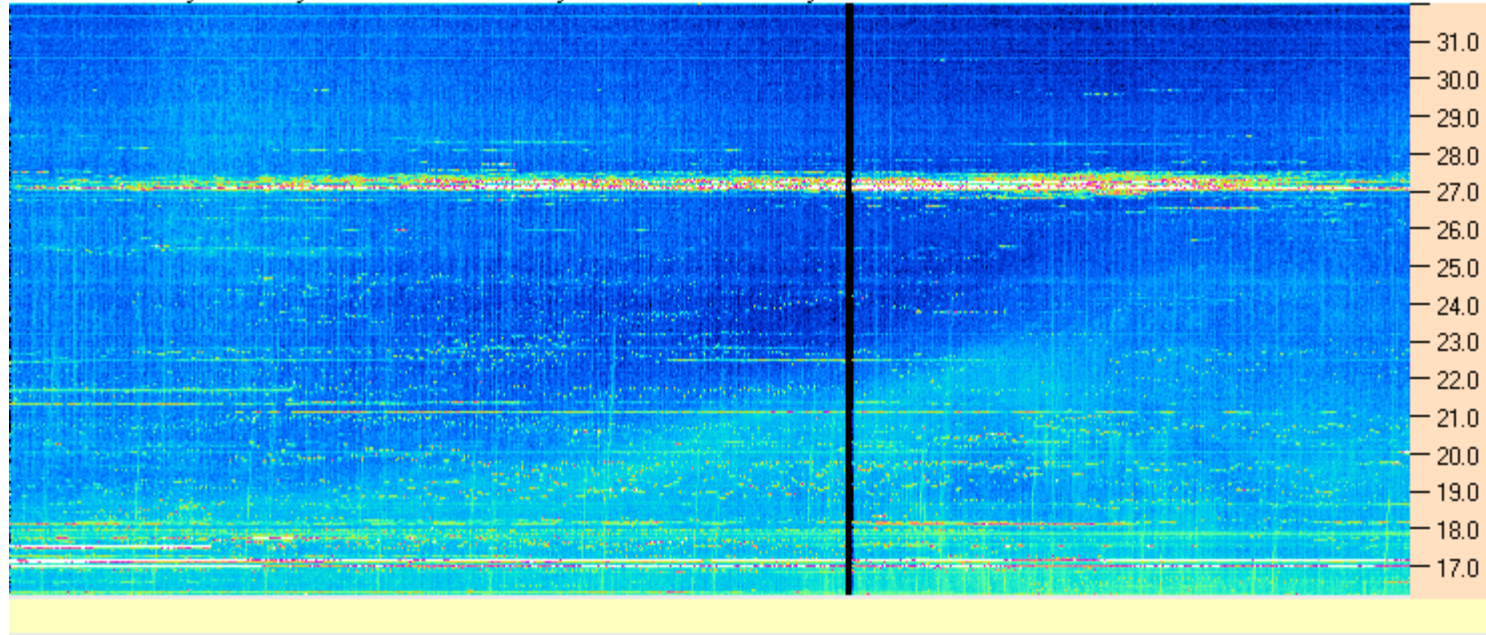




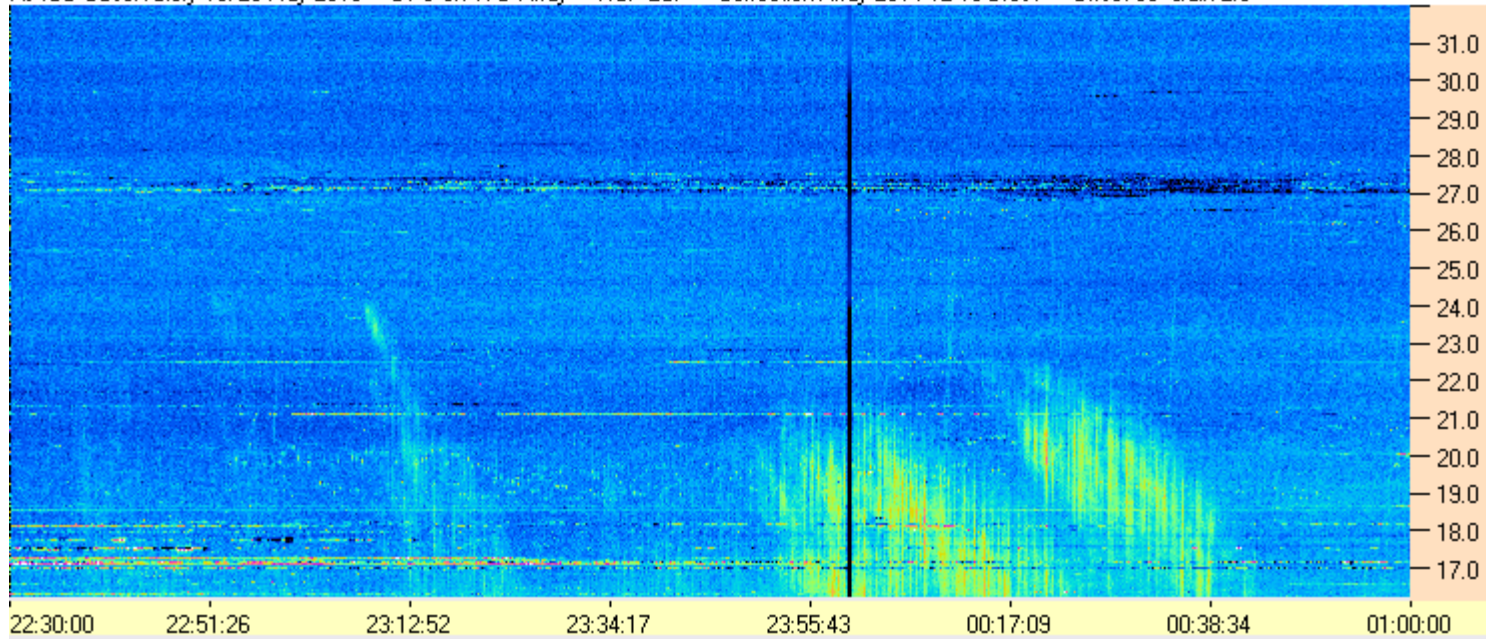
AJ4CO Observatory 19/20 May 2016 - DPS on TFD Array - RCP - Correction Array 2014 12 18 B.csv - Offset 2075 Gain 5.0



AJ4CO Observatory 19/20 May 2016 - DPS on TFD Array - LCP - Correction Array 2014 12 18 B.csv - Offset 2075 Gain 5.0



AJ4CO Observatory 19/20 May 2016 - DPS on TFD Array - RCP-LCP - Correction Array 2014 12 18 B.csv - Offset 50 Gain 2.0



AJ4CO Observatory 19/20 May 2016 - DPS on TFD Array - LCP-RCP - Correction Array 2014 12 18 B.csv - Offset 50 Gain 2.0

