

Subject: [radiojove-data] 14 Mar 2016 non-Io-B + Vir A

From: Dave Typinski <davetyp@typnet.net>

Date: 03/16/2016 21:54

To: RadioJove-Data <radiojove-data@lists.nasa.gov>

Adding to Tom & Nathan's nice reports, here's some weak non-Io-B from Monday morning with a Virgo A scintillation chaser.

RCP dominant L bursting 0524-0608 UTC from 16 to 23 MHz, positive drift emission envelopes.

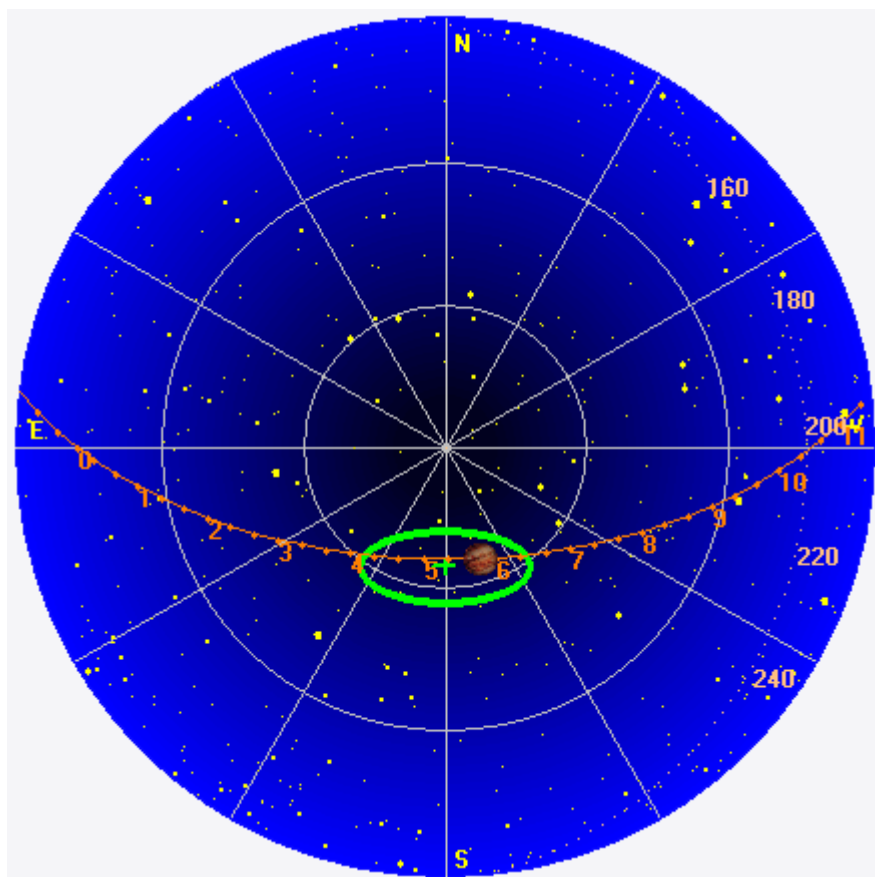
Jupiter was +2° to +13° off axis.

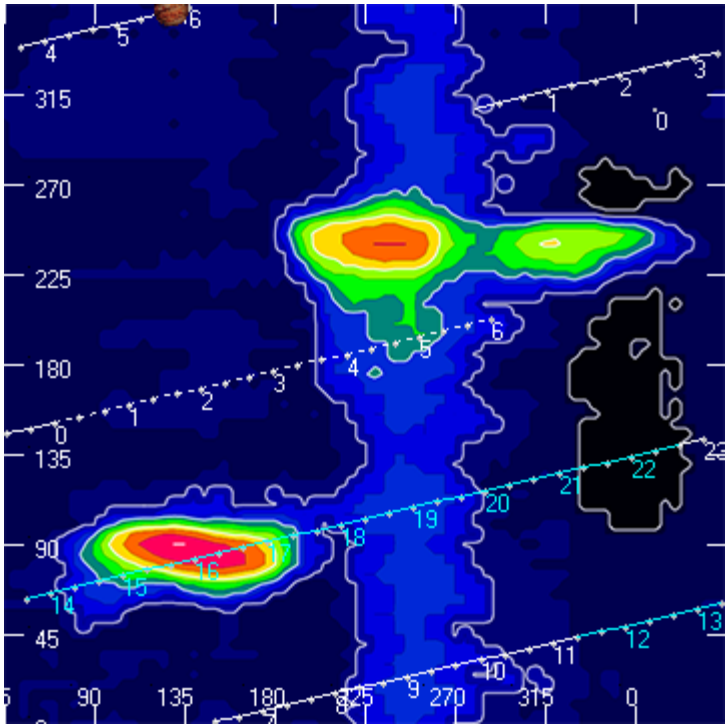
Jupiter was trailing the Sun by 173°.

--

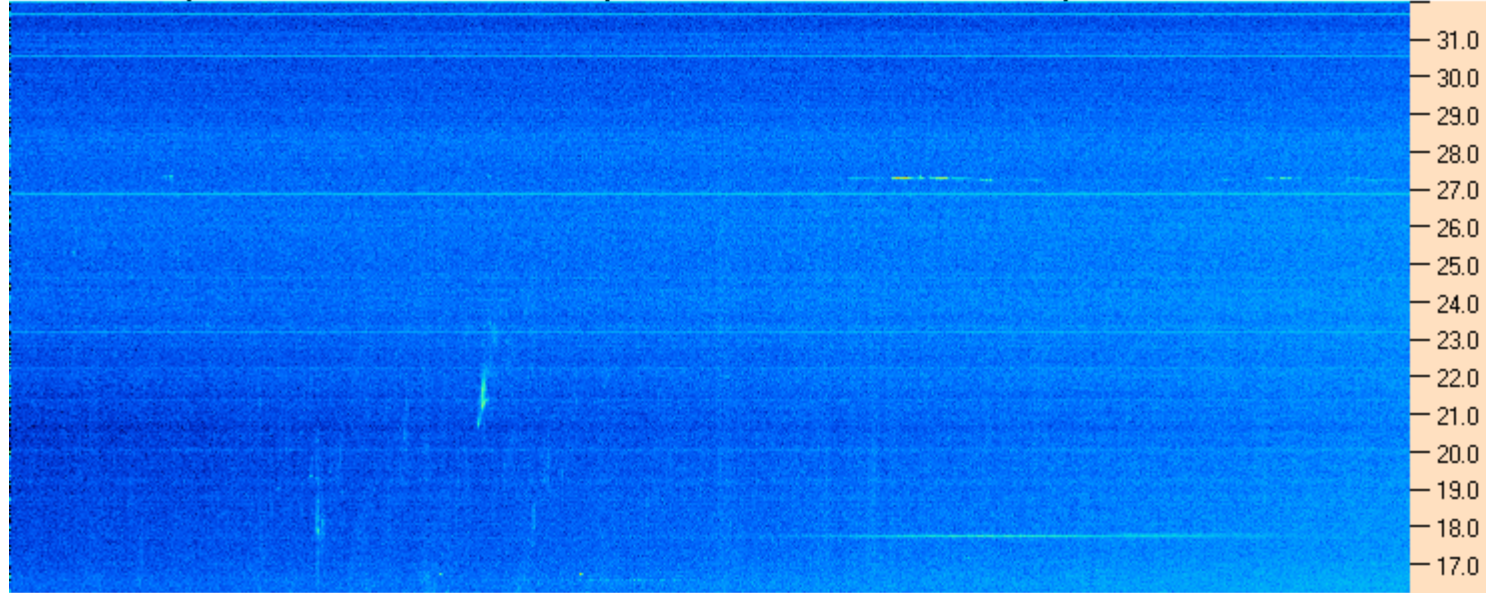
Dave

AJ4CO Observatory 14 Mar 2016, log entry 651



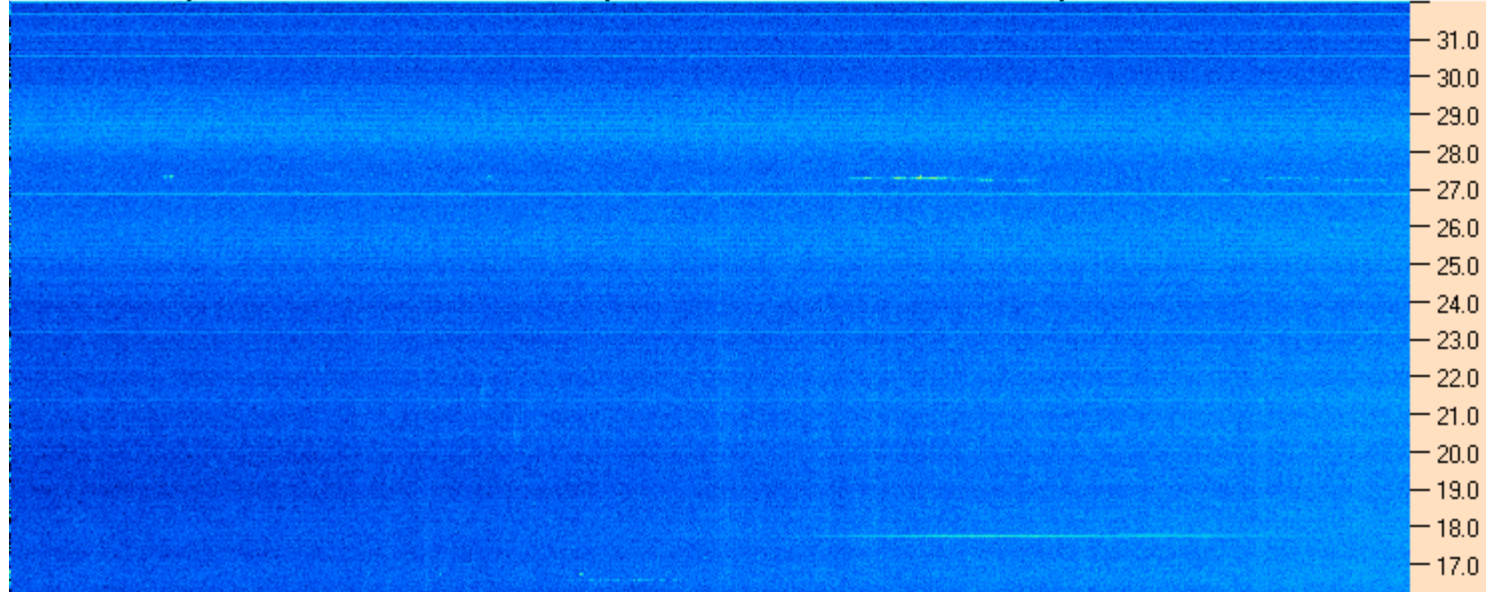


AJ4CO Observatory 14 Mar 2016 - DPS 30 kHz IF on TFD Array in CP Mode - RCP MC +13 dB Correction Array 2014 12 18 B.csv Offset 2050 Gain 5.0

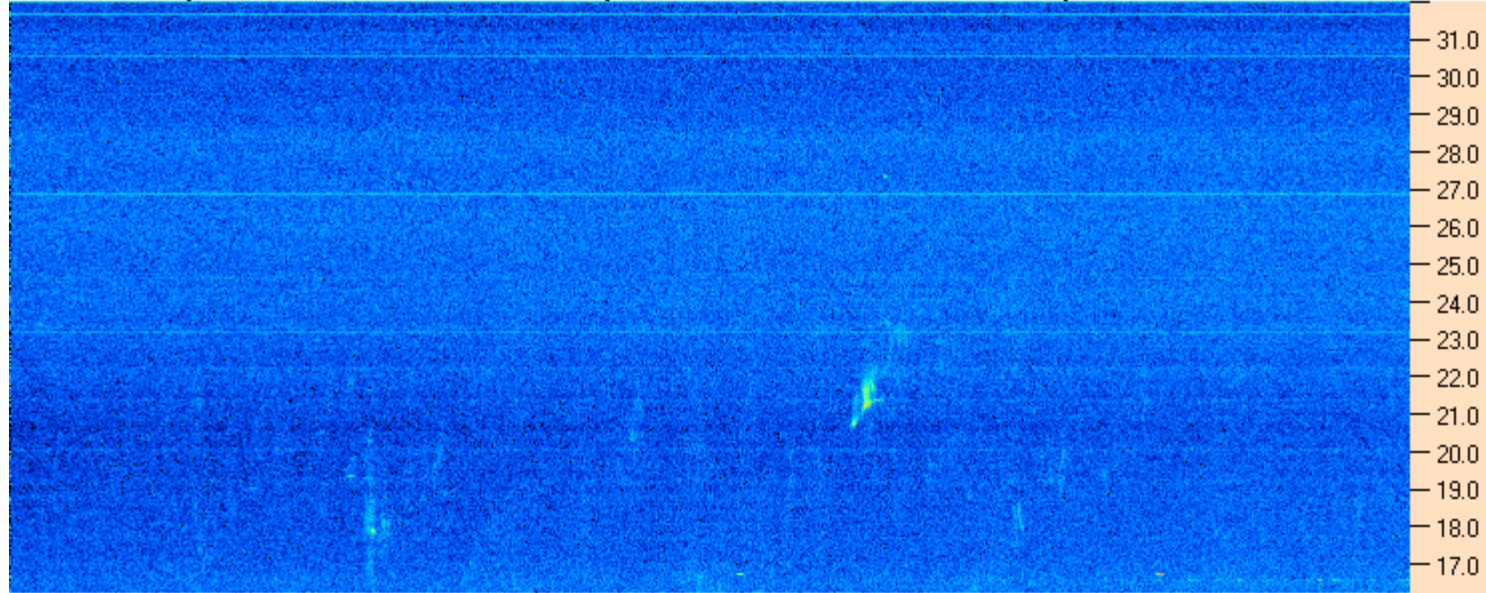


05:00:00 05:21:26 05:42:51 06:04:17 06:25:43 06:47:09 07:08:34 07:30:00

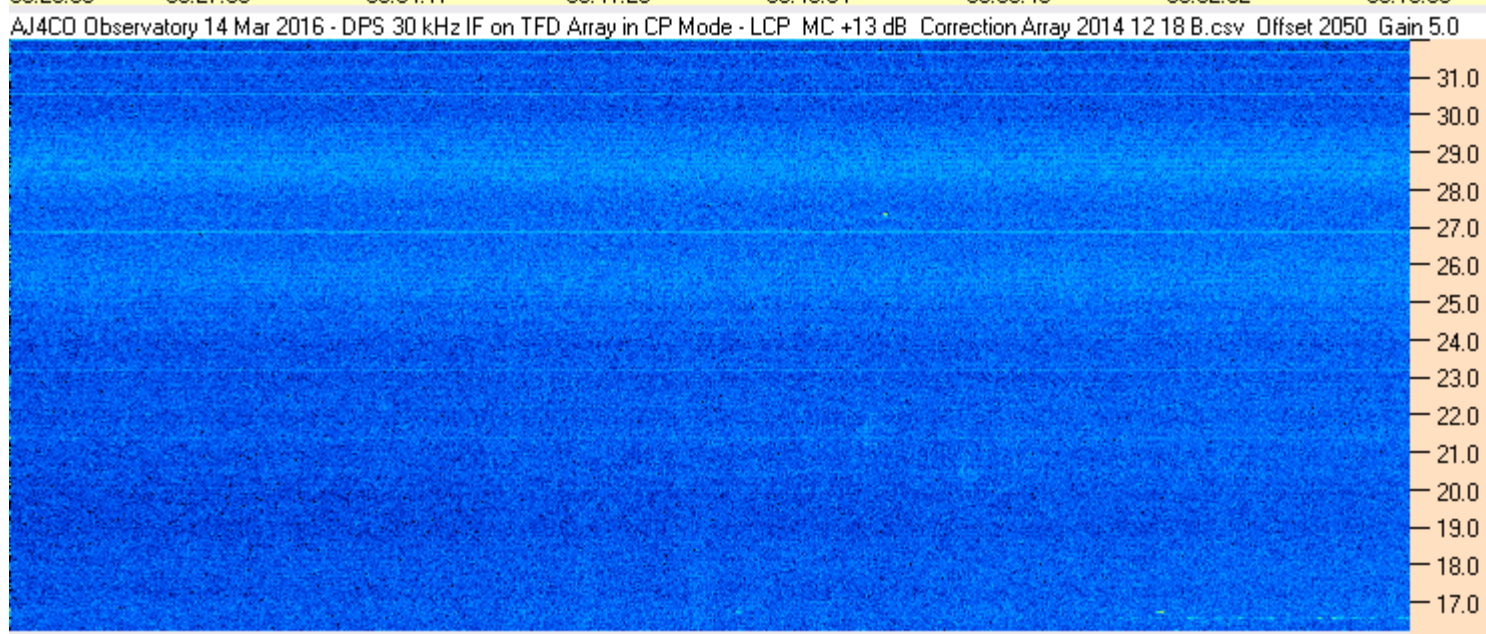
AJ4CO Observatory 14 Mar 2016 - DPS 30 kHz IF on TFD Array in CP Mode - LCP MC +13 dB Correction Array 2014 12 18 B.csv Offset 2050 Gain 5.0

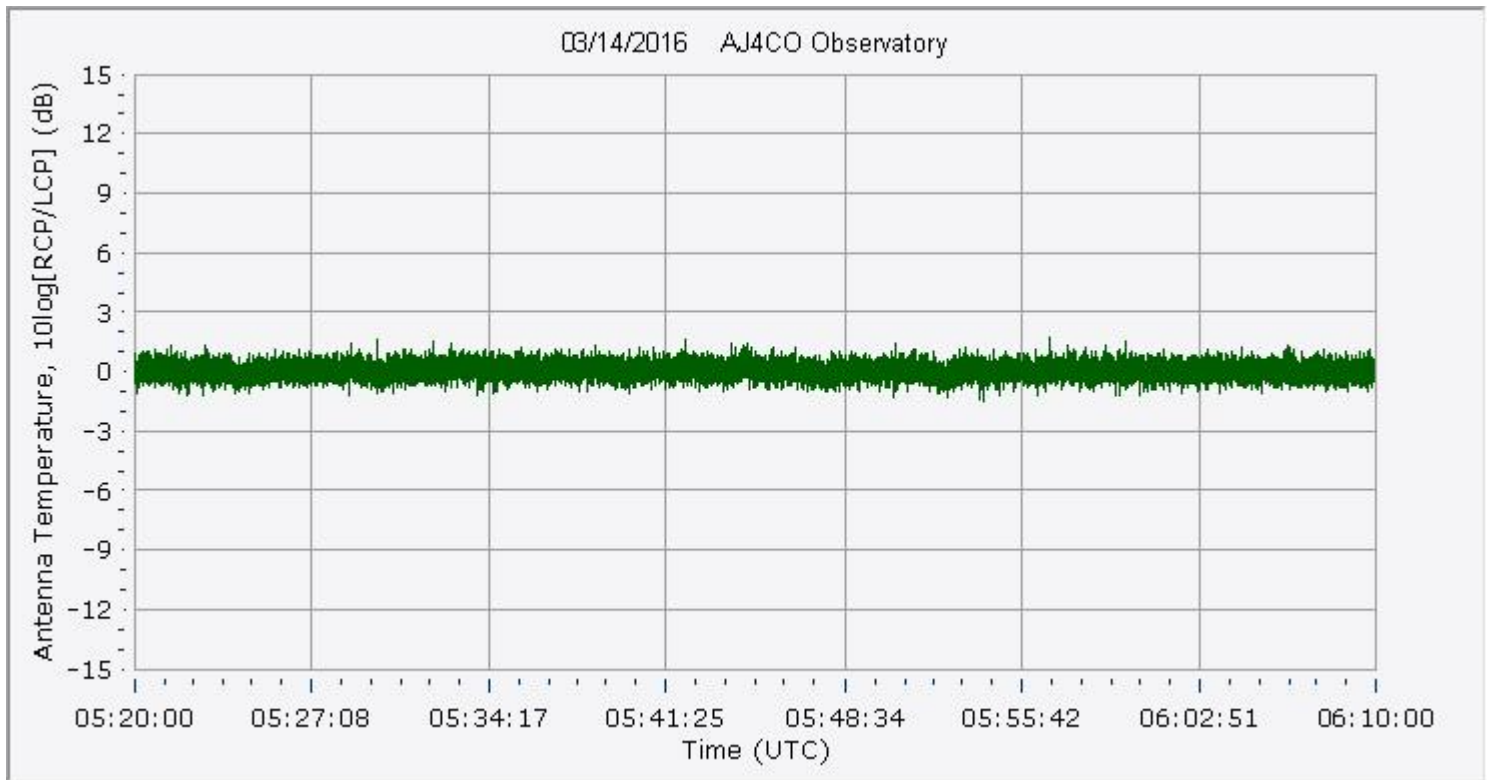
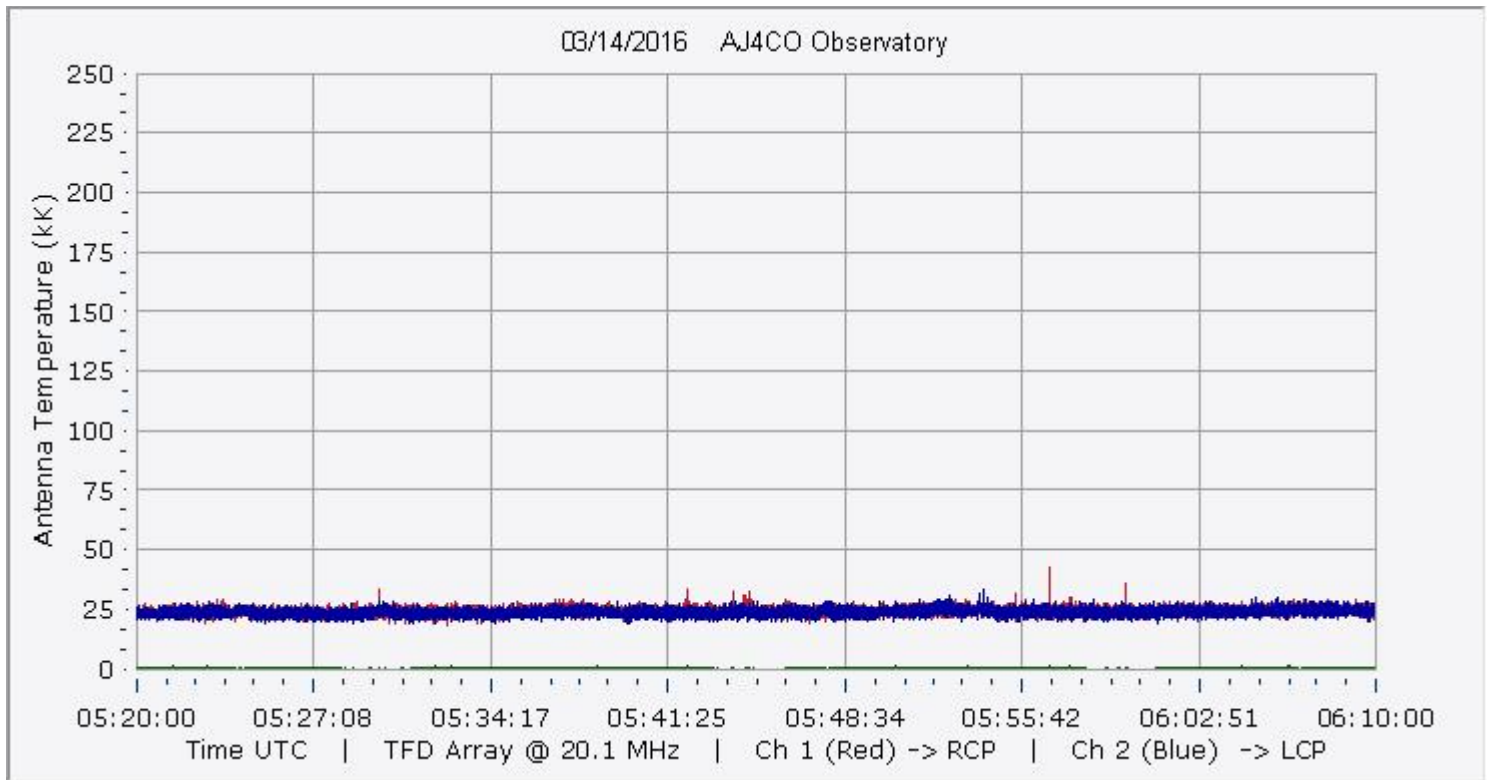


AJ4CO Observatory 14 Mar 2016 - DPS 30 kHz IF on TFD Array in CP Mode - RCP MC +13 dB Correction Array 2014 12 18 B.csv Offset 2050 Gain 5.0

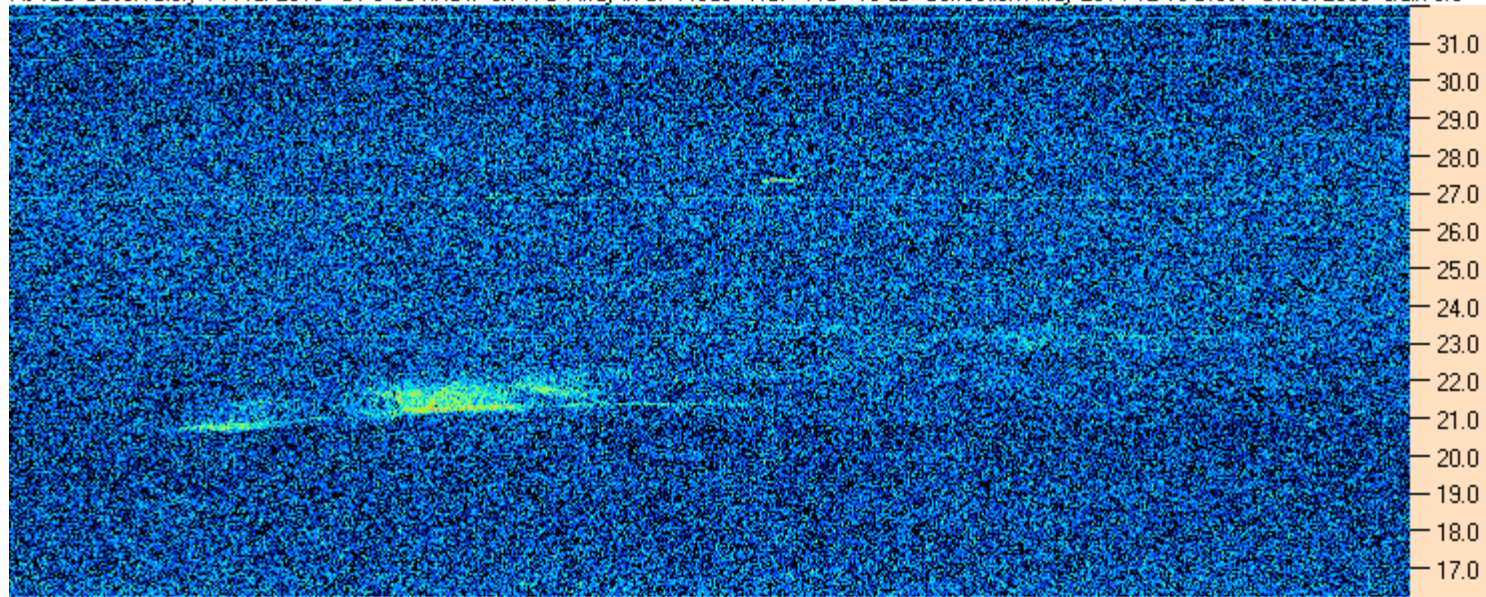


AJ4CO Observatory 14 Mar 2016 - DPS 30 kHz IF on TFD Array in CP Mode - LCP MC +13 dB Correction Array 2014 12 18 B.csv Offset 2050 Gain 5.0





AJ4CO Observatory 14 Mar 2016 - DPS 30 kHz IF on TFD Array in CP Mode - RCP MC +13 dB Correction Array 2014 12 18 B.csv Offset 2050 Gain 5.0



05:49:39 05:50:04 05:50:28 05:50:52 05:51:16 05:51:40 05:52:05 05:52:29

AJ4CO Observatory 14 Mar 2016 - DPS 30 kHz IF on TFD Array in CP Mode - LCP MC +13 dB Correction Array 2014 12 18 B.csv Offset 2050 Gain 5.0

