

Subject: [radiojove-data] 29 Dec 2015 Io-B

From: Dave Typinski <davetyp@typnet.net>

Date: 12/30/2015 22:53

To: RadioJove-Data <radiojove-data@lists.nasa.gov>

Adding to Tom's nice reports, here's some brief, weak, nearly non-existent Io-B from Tuesday morning.

RCP dominant L bursting 1249-1254 UTC from 20 to 22 MHz, zero frequency drift, no modulation lanes visible.

RCP dominant N event 1300-1301 UTC at 19 MHz.

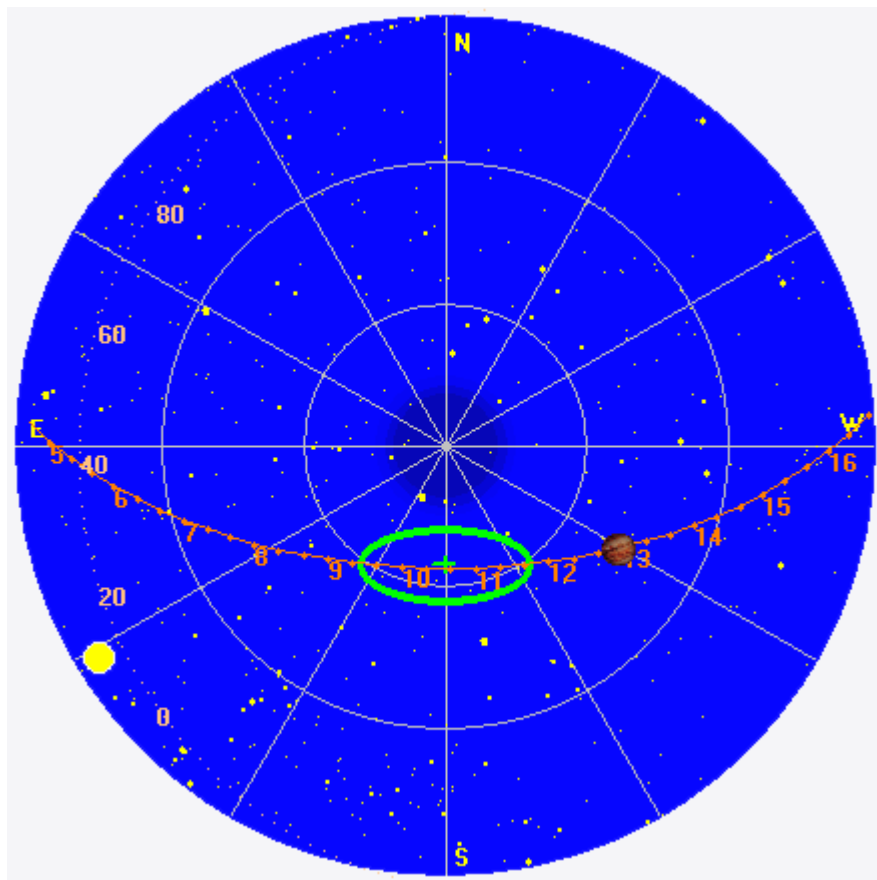
Jupiter was +33° to +36° off axis.

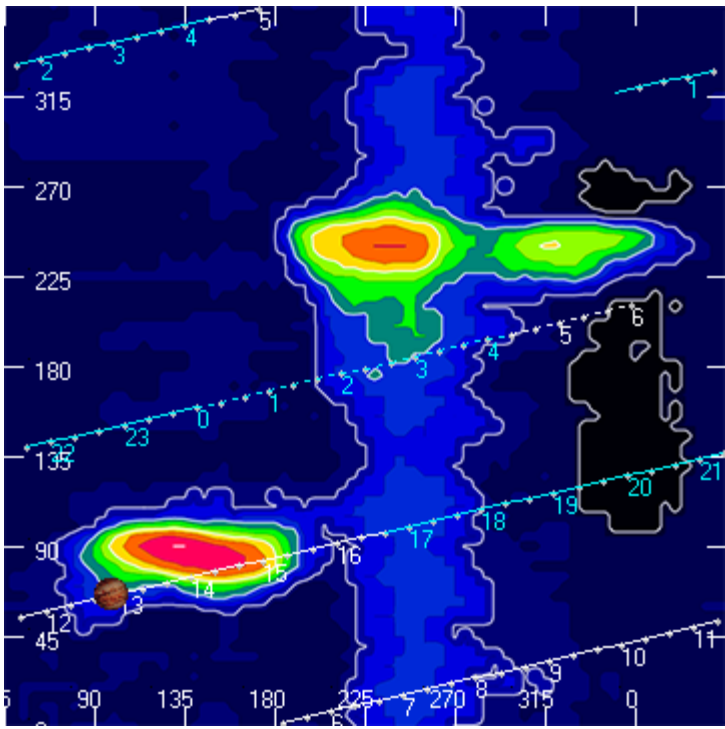
Jupiter was leading the Sun by 104°.

--

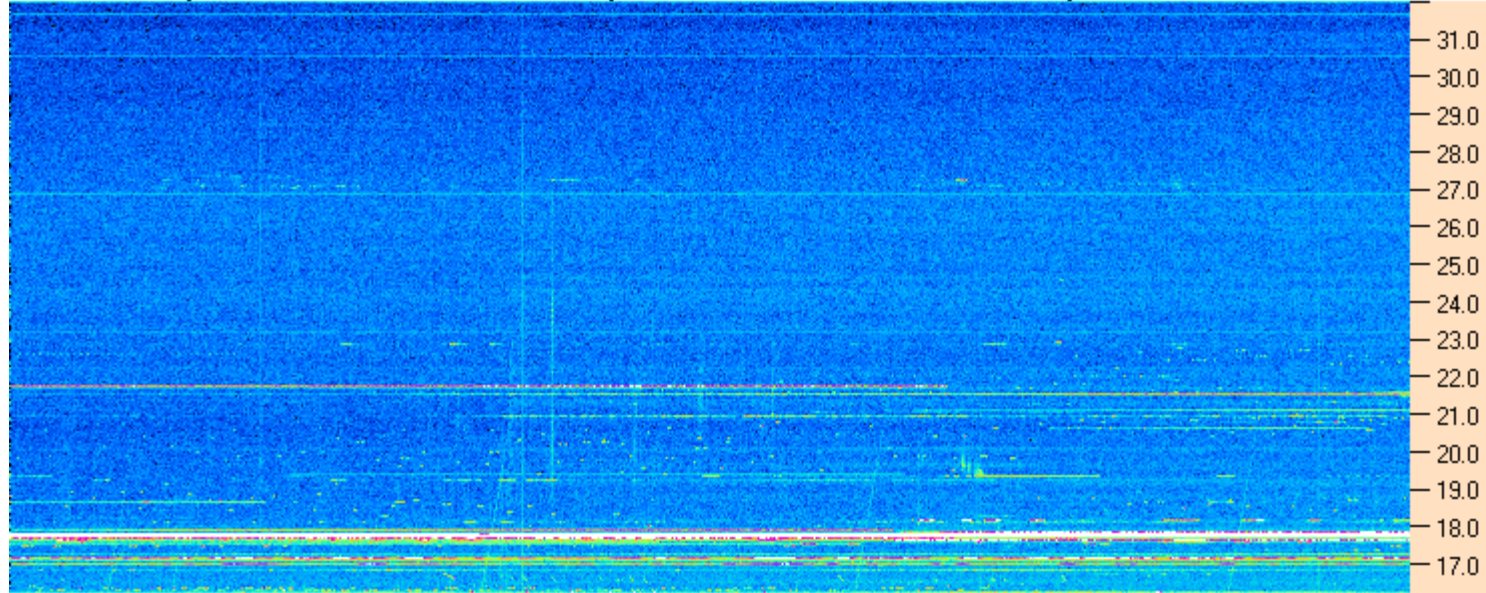
Dave

AJ4CO Observatory 29 Dec 2015, log entry 525 - 526



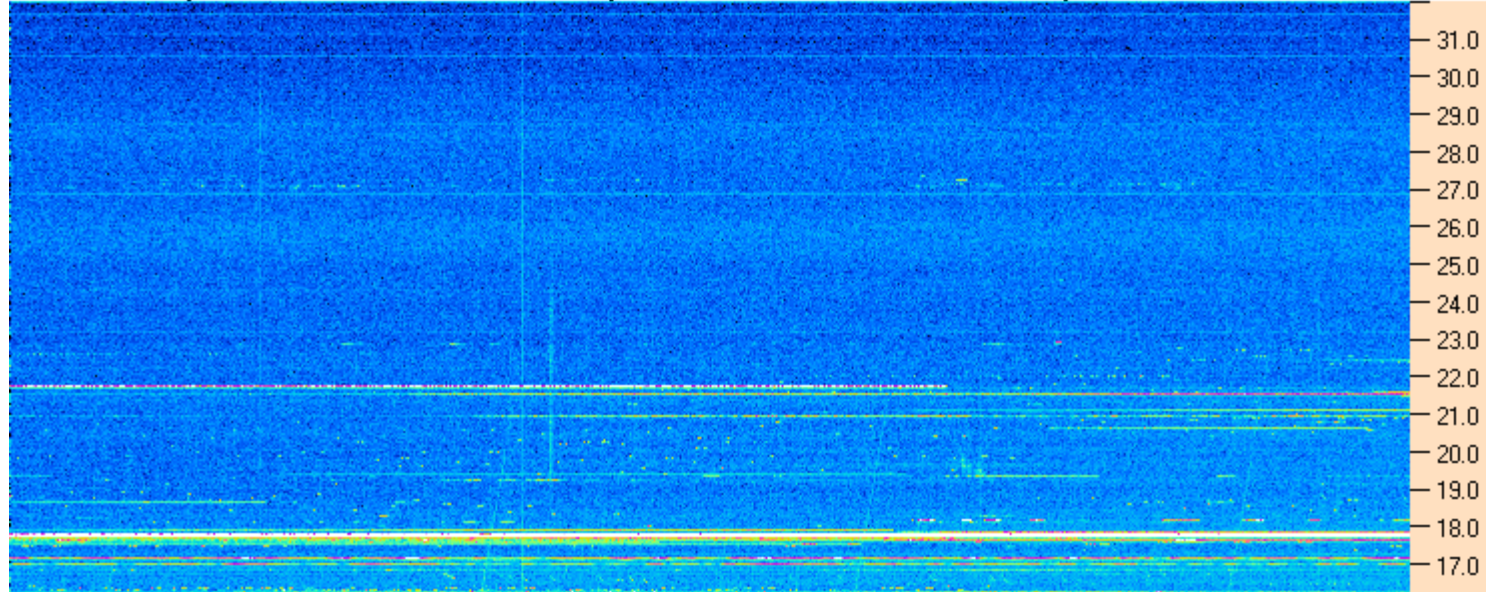


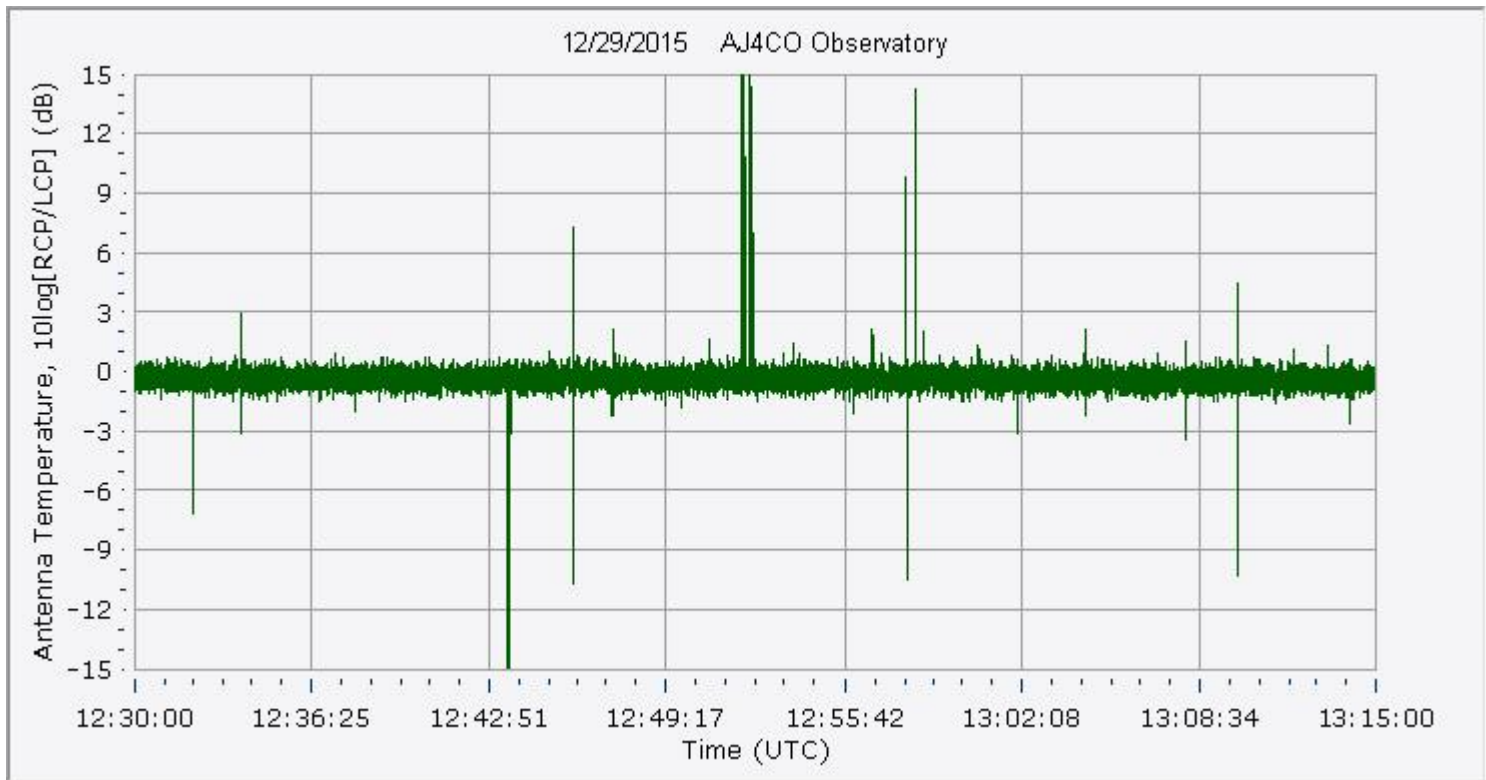
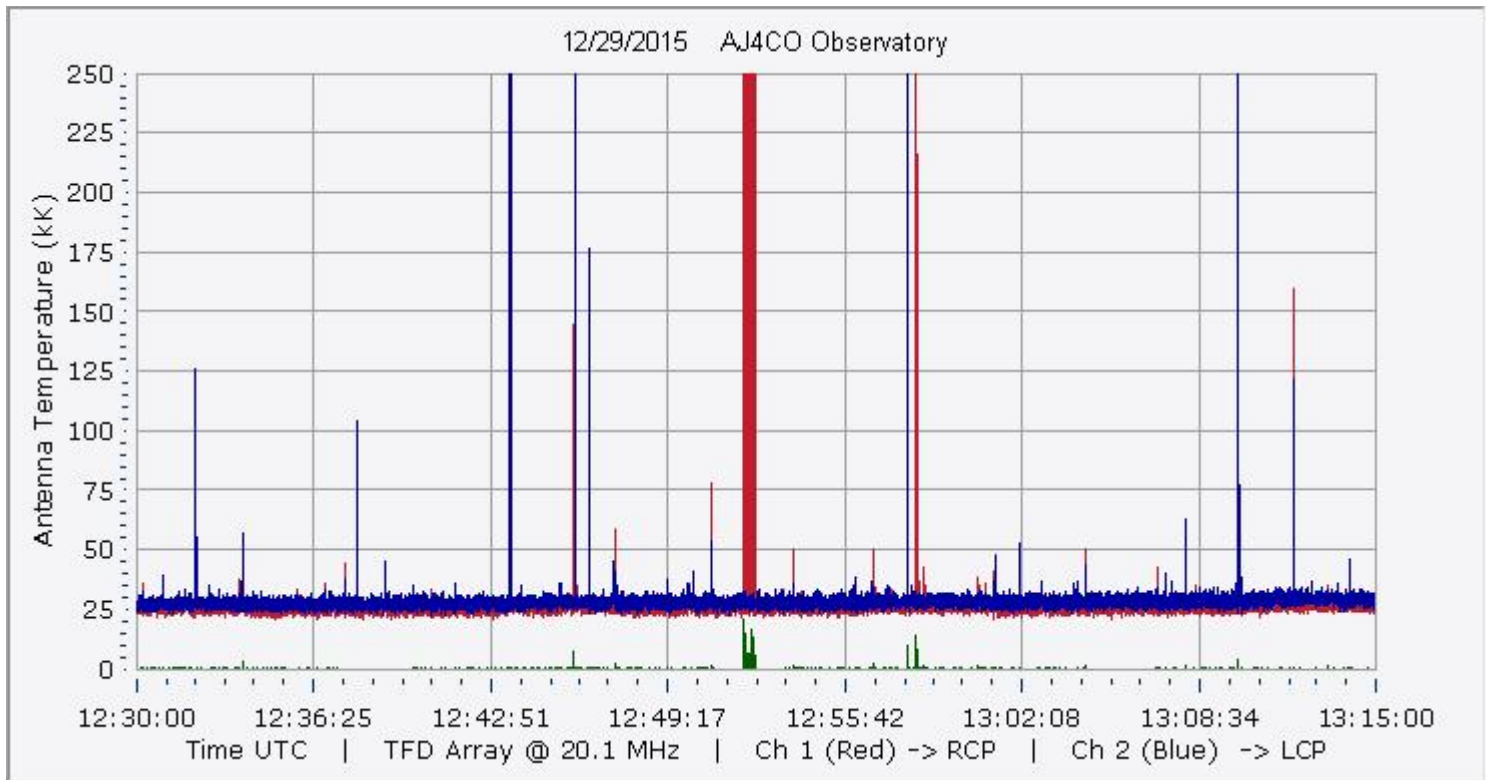
AJ4CO Observatory 29 Dec 2015 - DPS 30 kHz IF on TFD Array in CP Mode - RCP MC +13 dB Correction Array 2014 12 18 B.csv Offset 2060 Gain 5.0



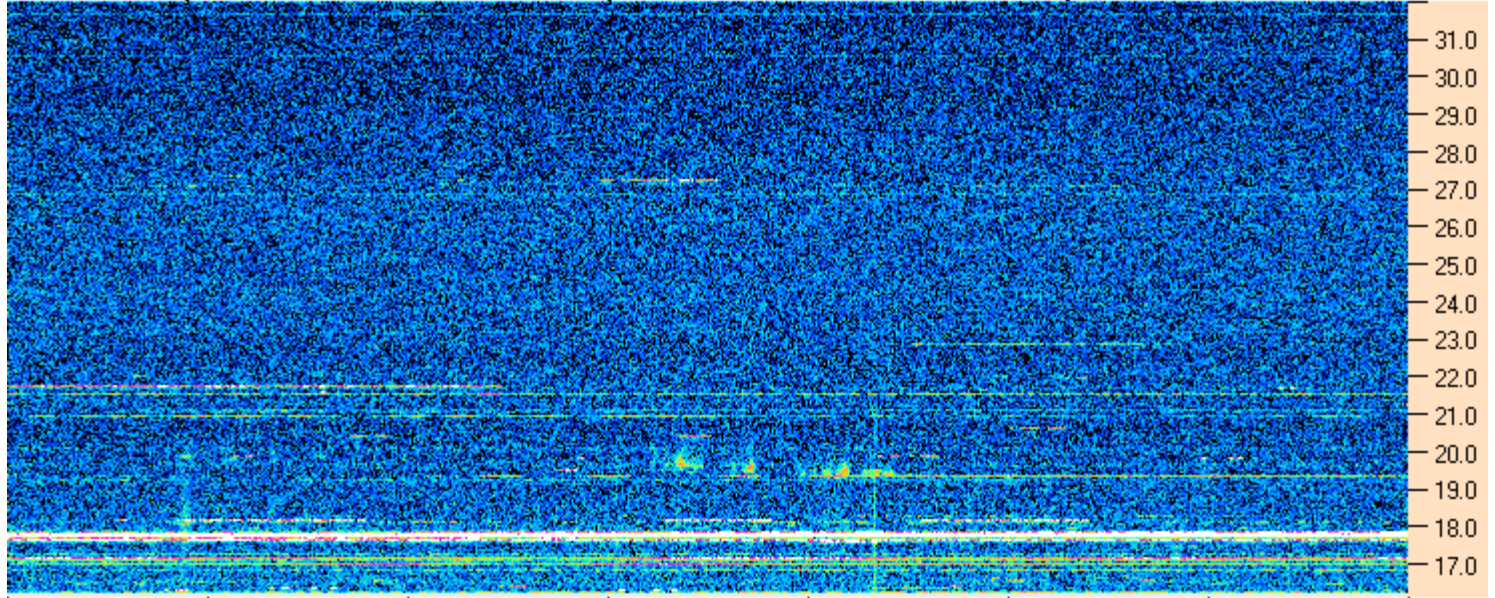
12:30:00 12:36:26 12:42:52 12:49:17 12:55:43 13:02:09 13:08:34 13:15:00

AJ4CO Observatory 29 Dec 2015 - DPS 30 kHz IF on TFD Array in CP Mode - LCP MC +13 dB Correction Array 2014 12 18 B.csv Offset 2060 Gain 5.0





AJ4CO Observatory 29 Dec 2015 - DPS 30 kHz IF on TFD Array in CP Mode - RCP MC +13 dB Correction Array 2014 12 18 B.csv Offset 2090 Gain 5.0



AJ4CO Observatory 29 Dec 2015 - DPS 30 kHz IF on TFD Array in CP Mode - LCP MC +13 dB Correction Array 2014 12 18 B.csv Offset 2090 Gain 5.0

