

**Subject:** [radiojove-data] 22 Jun 2015 Solar  
**From:** Dave Typinski <davetyp@typnet.net>  
**Date:** 06/23/2015 23:39  
**To:** RadioJove-Data <radiojove-data@lists.nasa.gov>

Adding to David & Tom & Dick & Jim & Wes's nice solar reports, here's some solar Type II (slow drift burst) and some really long duration Type IV (smooth continuum bursting) from Monday afternoon.

Interesting polarization --  
 The Type II emission from 1811 to 1814 UTC was fairly LCP dominant.  
 The Type IV emission from 2000 to 2035 UTC was strongly RCP dominant.

The Type IV emission above 25 MHz starting around 2040 UTC lasted at least until 2359, possibly into the next UTC day.

Interesting diffraction/refraction pattern in Wes's spectrogram. Saw a similar, but less well defined pattern here at the same time. See Wes's spectrogram; there's a U-shaped artifact centered at 2000 UTC. I believe this is an ionospheric blob passing directly between Wes's observatory and the Sun -- but not quite so much between AJ4CO and the Sun.

There was also a local thunderstorm that shows up stronger about 1930 UTC or so. Wipes out the antenna temp strip chart and makes the polarization strip chart pretty fuzzy. This is probably the same storm that blew out Wes's power; he's only 10 miles from here.

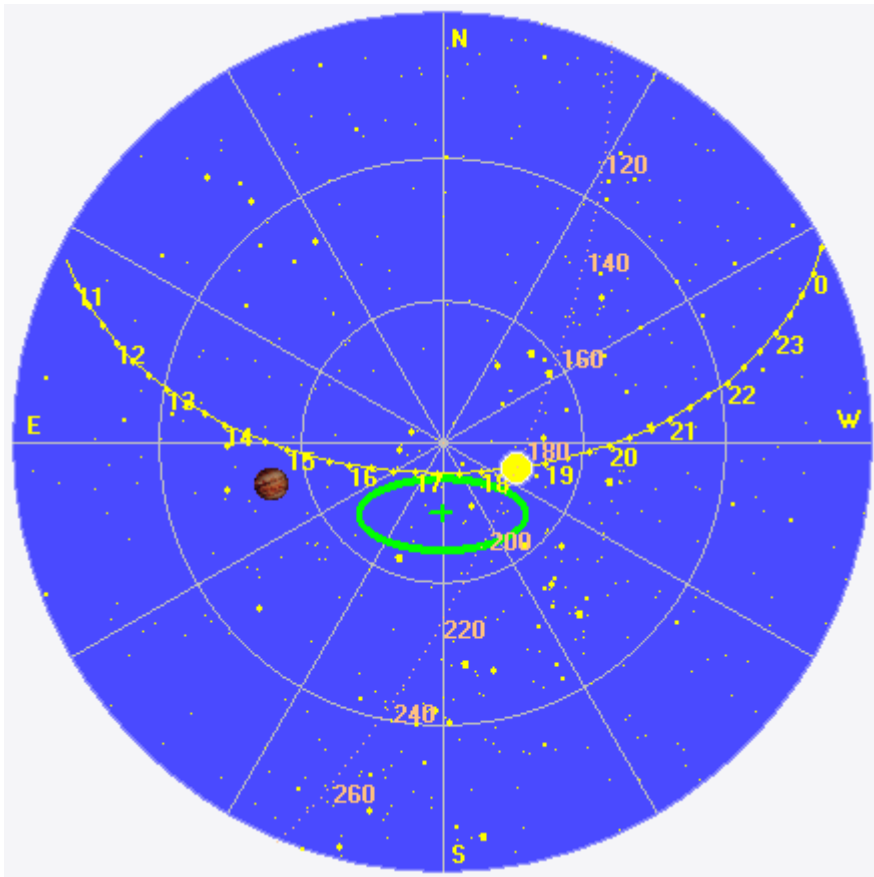
```
#                               Edited Events for 2015 Jun 22
#
#Event   Begin   Max       End  Obs  Q  Type  Loc/Frq  Particulars  Reg#
#-----
6100 +   1739   1823     1851  G15  5   XRA  1-8A    M6.5    1.9E-01  2371
6100 +   1805   // // //  1826  SAG  C   RSP  025-180  II/1    1480    2371
6250     1907   // // //  2335  PAL  C   RSP  025-180  VI/2
```

--  
 Dave

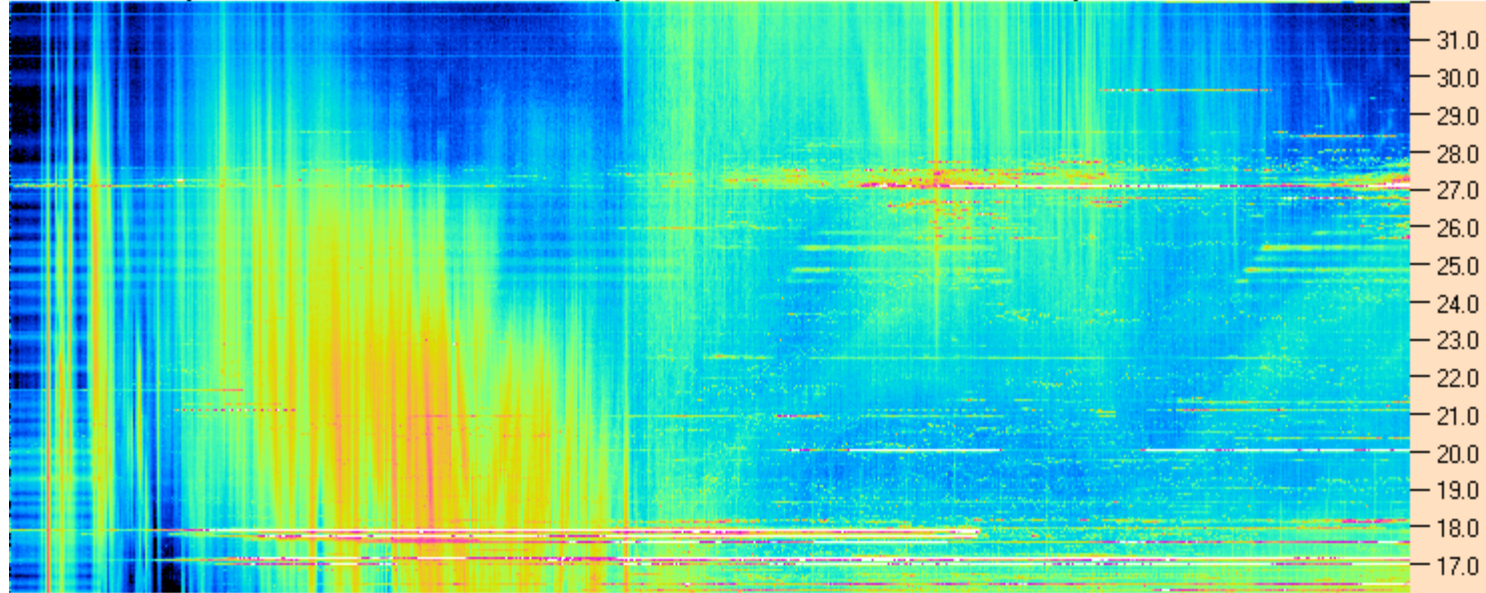
---

**AJ4CO Observatory 22 Jun 2015**

---

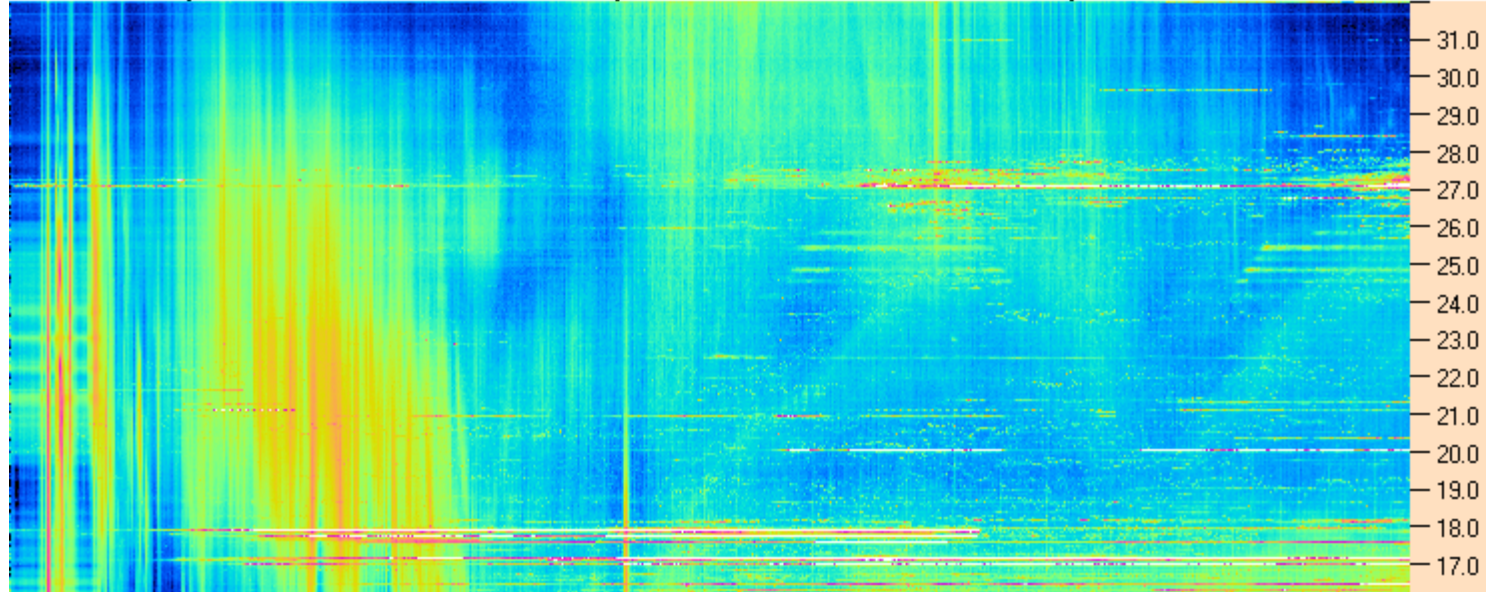


AJ4CO Observatory - 22 Jun 2015 - DPS 30 kHz IF on TFD Array in CP Mode - RCP MC +13 dB Correction Array 2014 12 18 B.csv Offset 2100 Gain 4.0

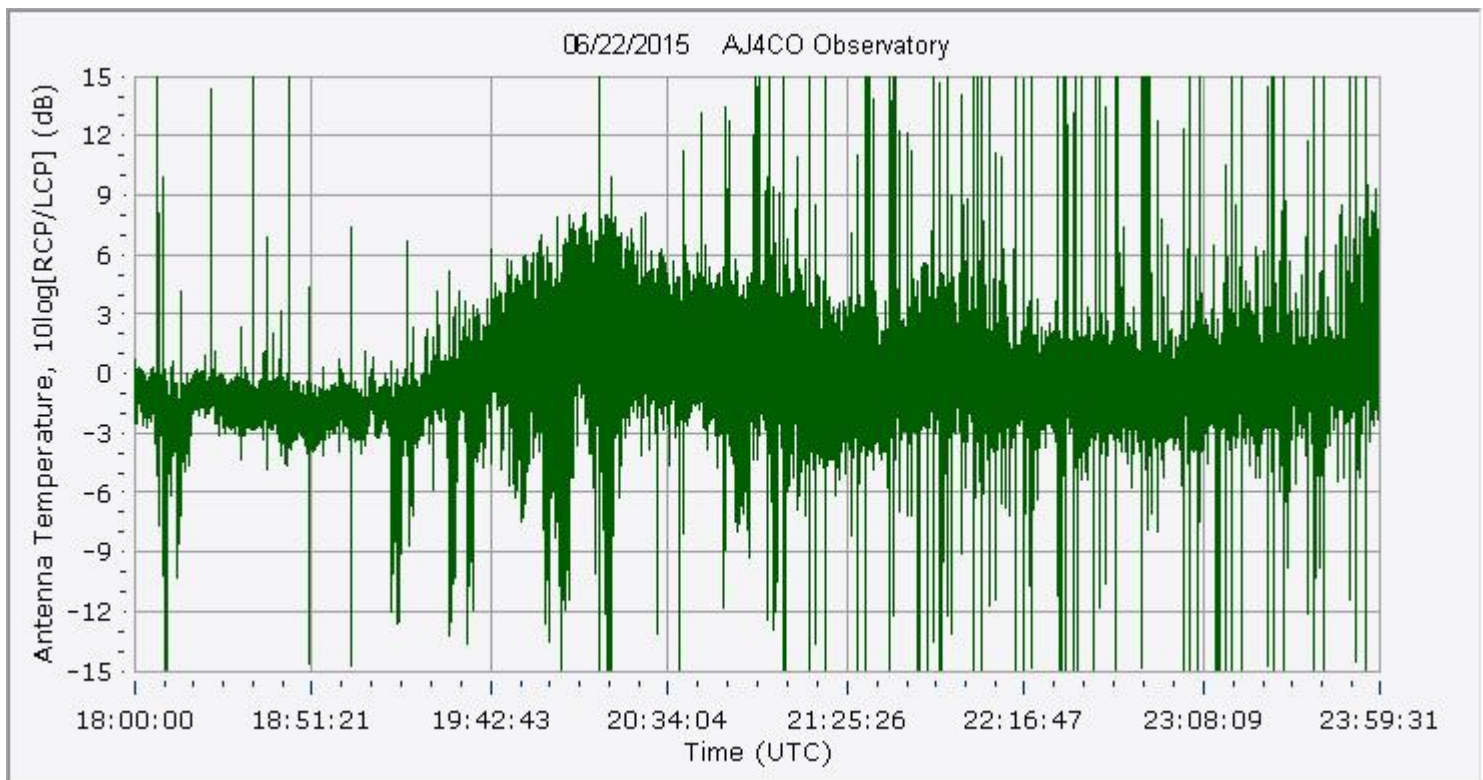
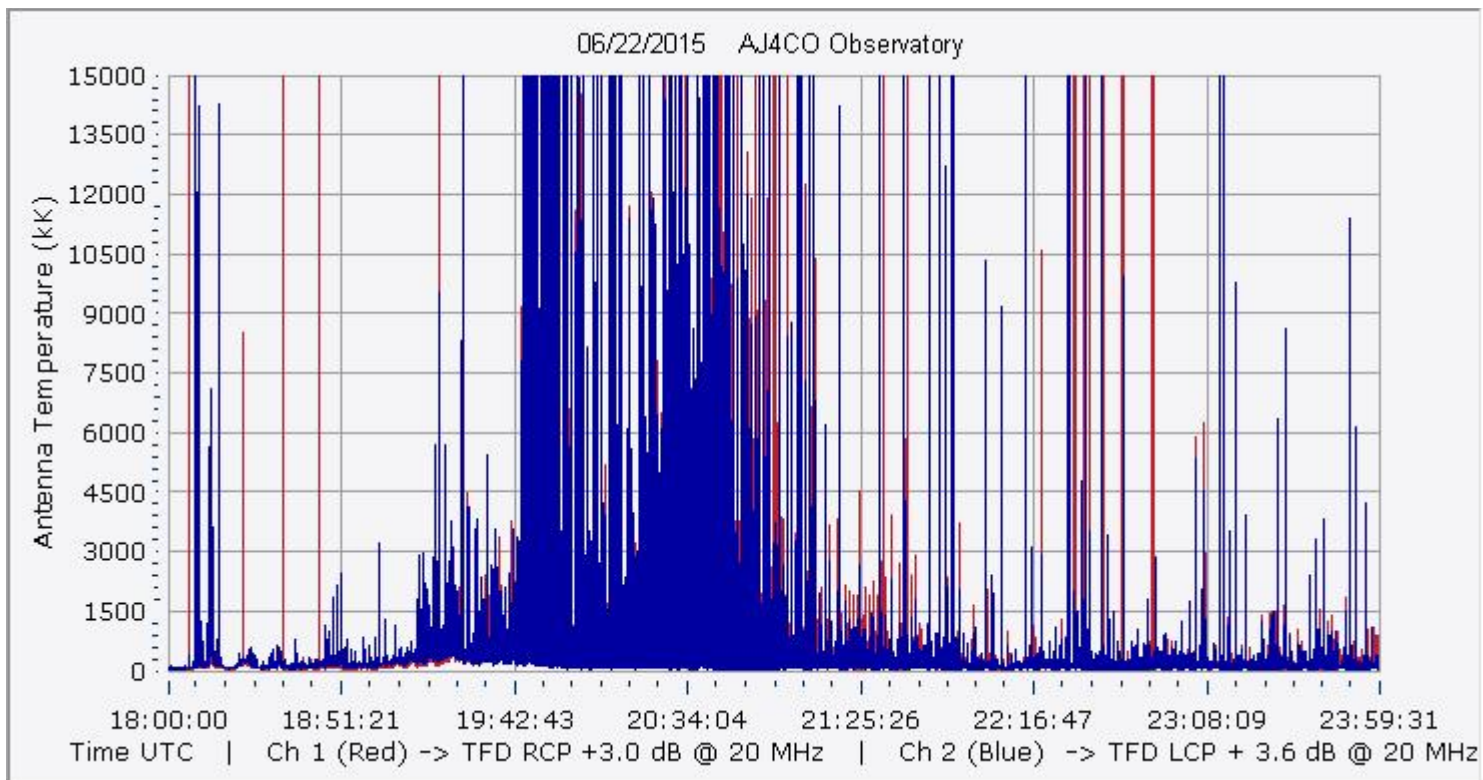


18:00:00 18:51:22 19:42:43 20:34:05 21:25:26 22:16:48 23:08:09 23:59:31

AJ4CO Observatory - 22 Jun 2015 - DPS 30 kHz IF on TFD Array in CP Mode - LCP MC +13 dB Correction Array 2014 12 18 B.csv Offset 2100 Gain 4.0

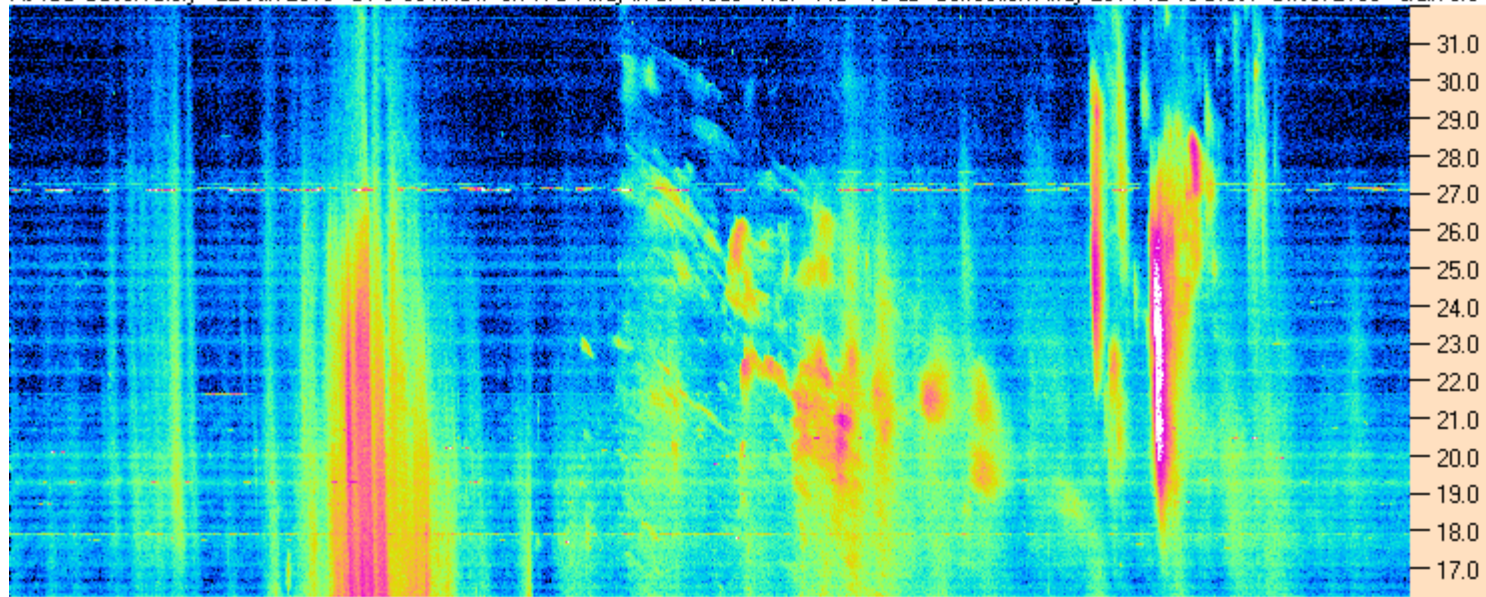






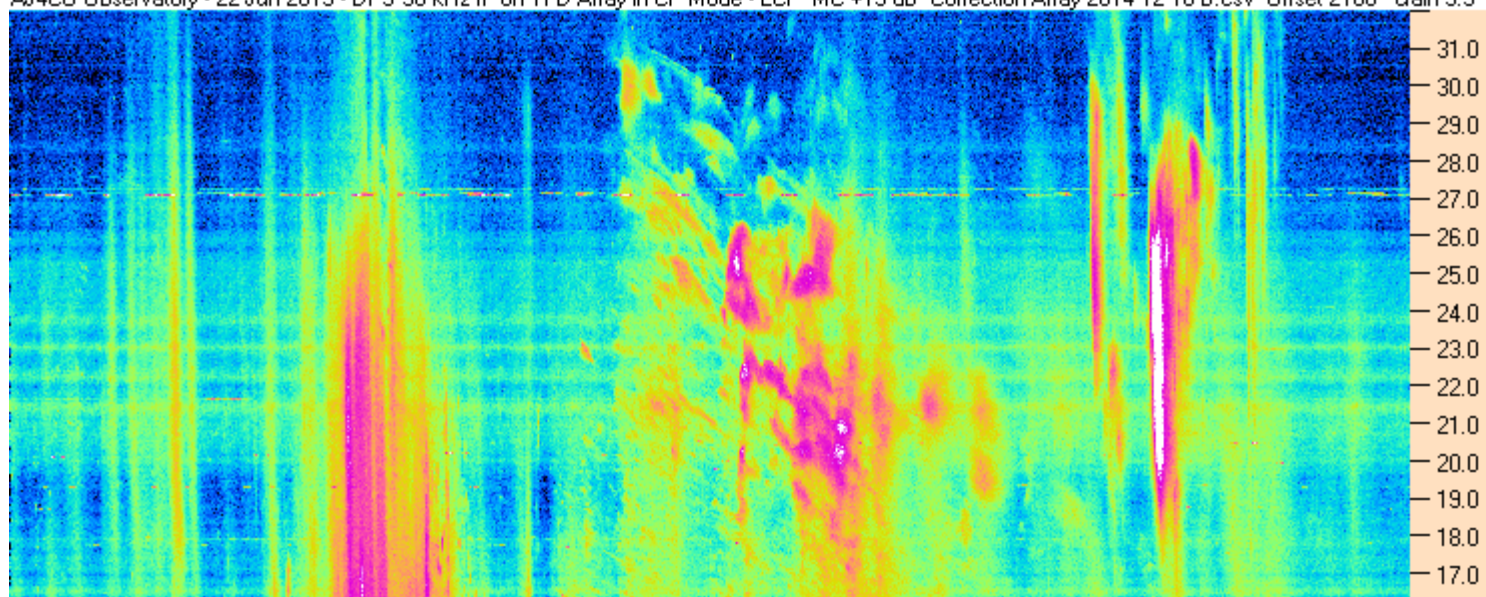


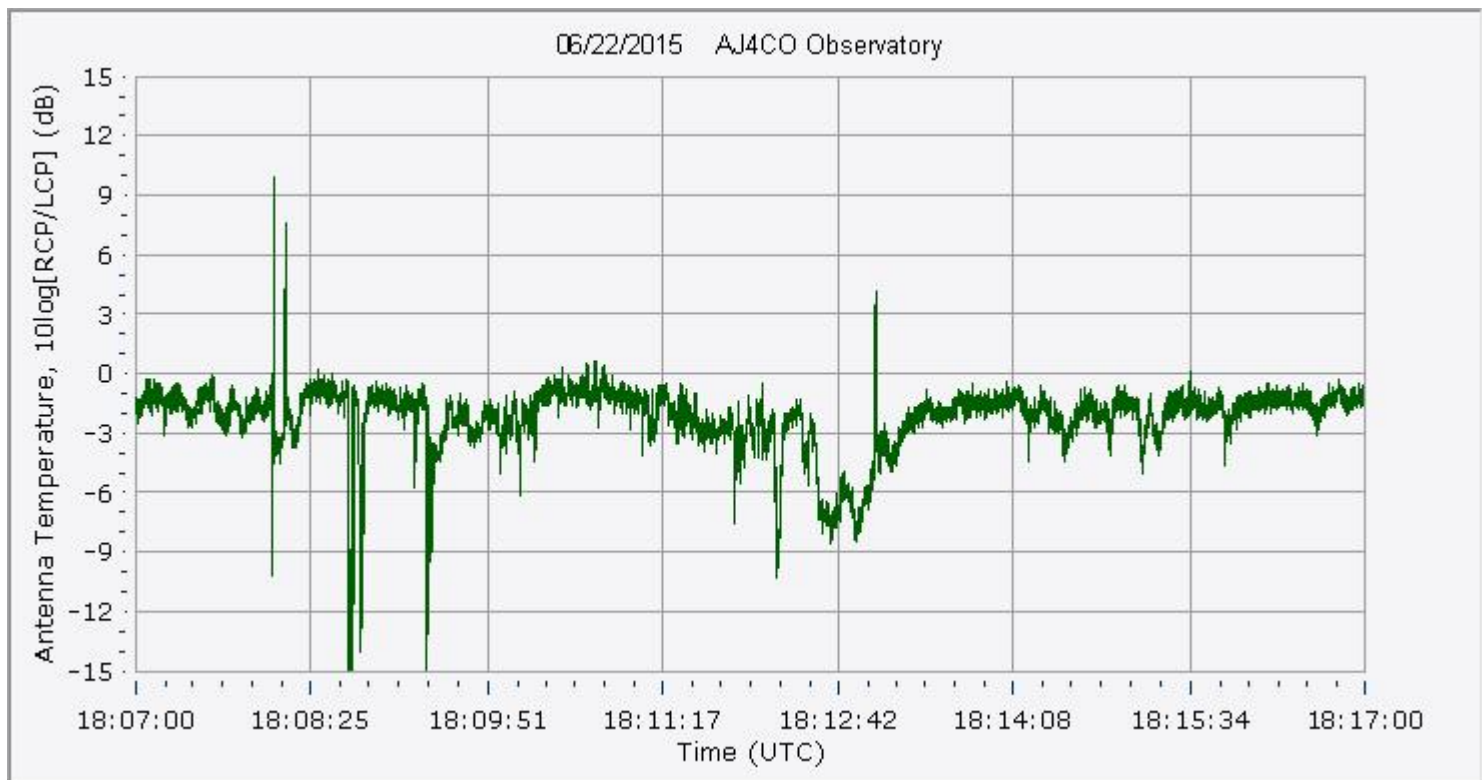
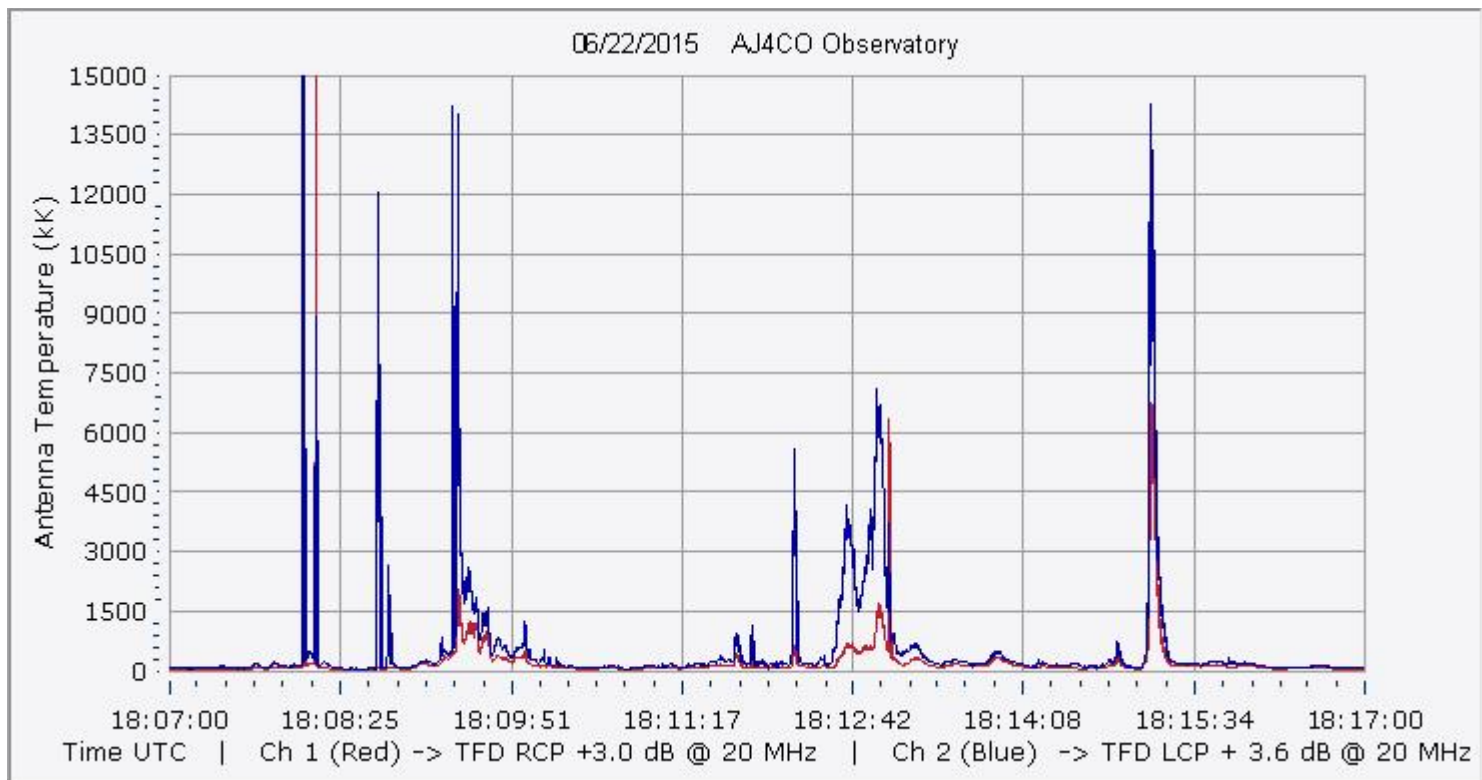
AJ4CO Observatory - 22 Jun 2015 - DPS 30 kHz IF on TFD Array in CP Mode - RCP MC +13 dB Correction Array 2014 12 18 B.csv Offset 2100 Gain 3.5



18:07:00 18:08:26 18:09:52 18:11:17 18:12:43 18:14:09 18:15:34 18:17:00

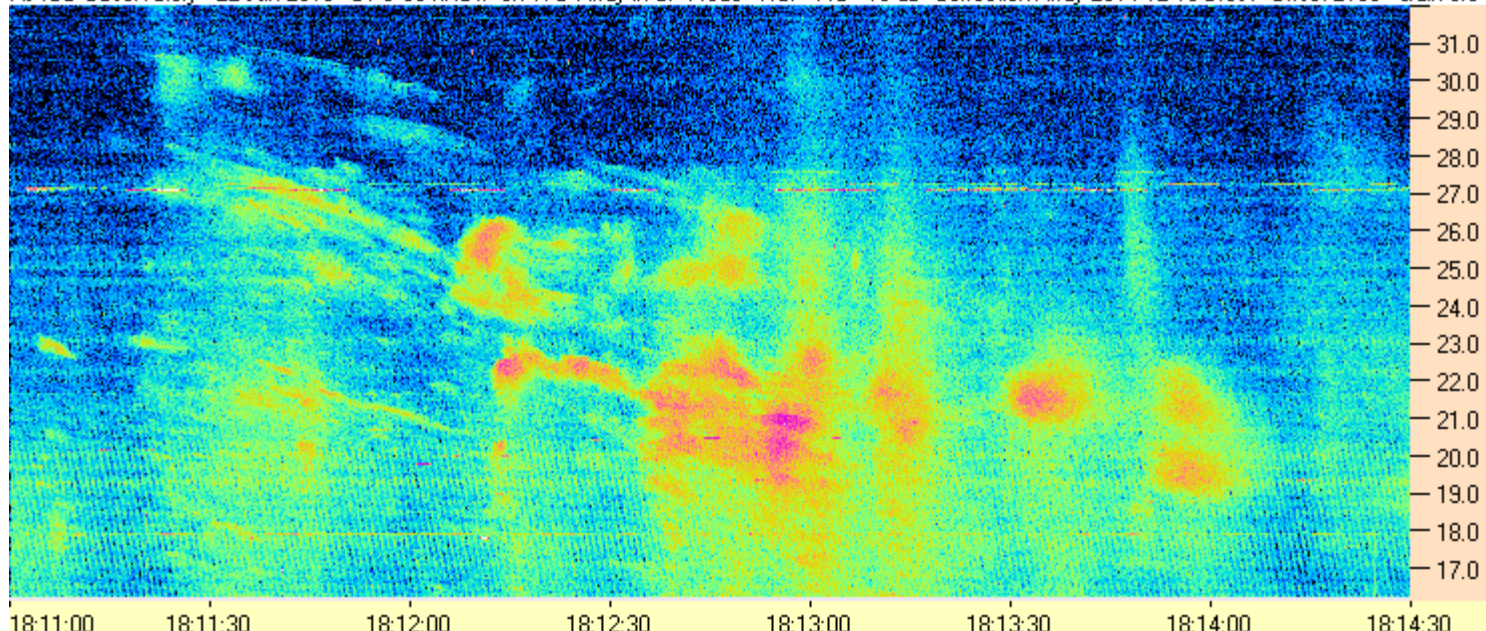
AJ4CO Observatory - 22 Jun 2015 - DPS 30 kHz IF on TFD Array in CP Mode - LCP MC +13 dB Correction Array 2014 12 18 B.csv Offset 2100 Gain 3.5



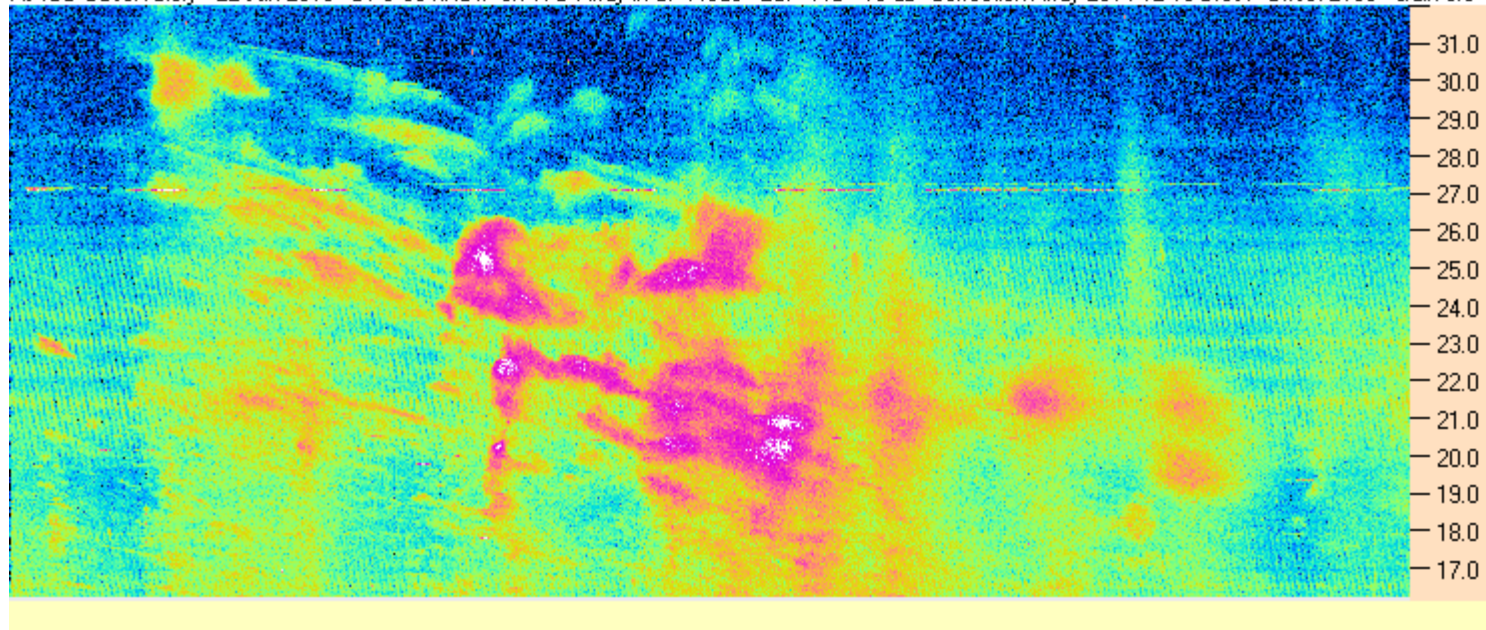




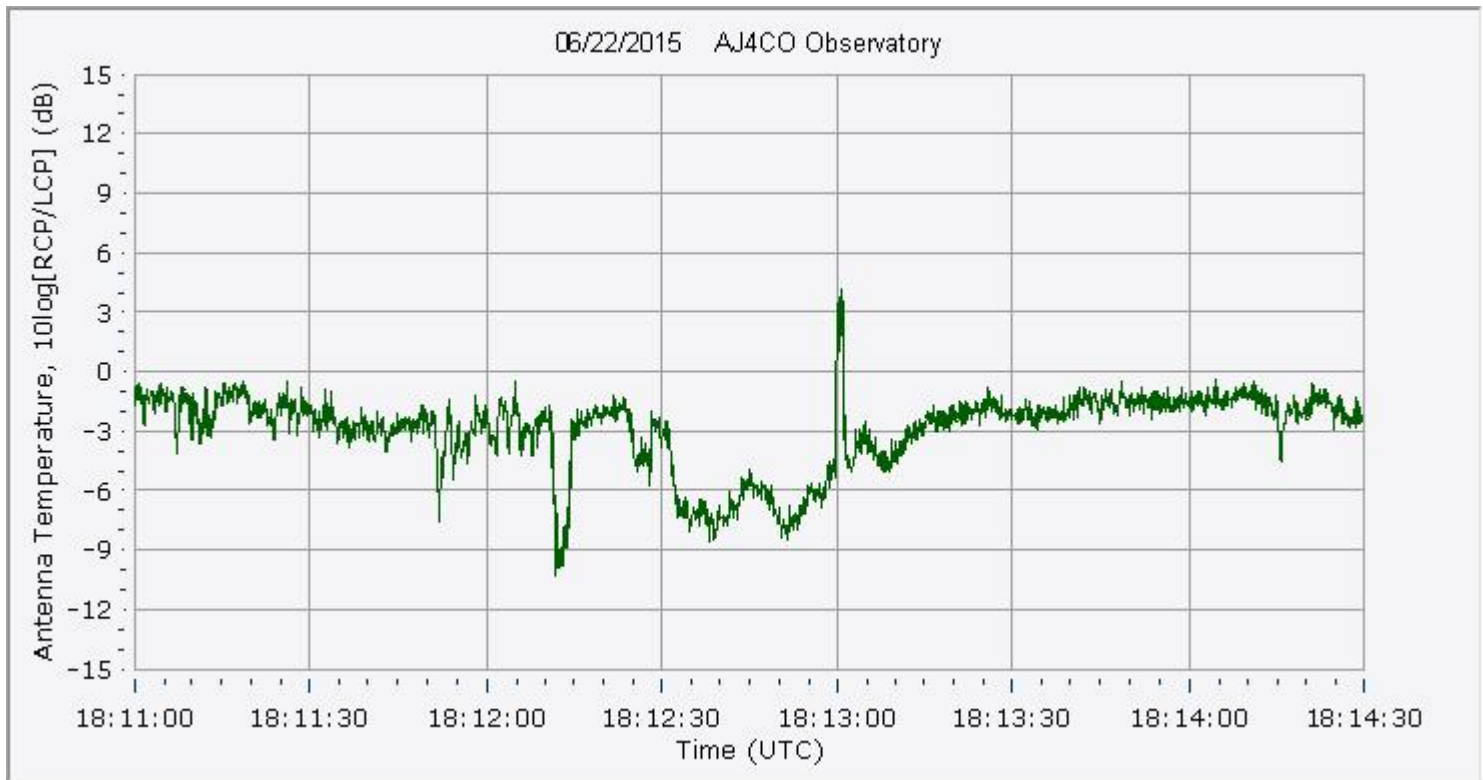
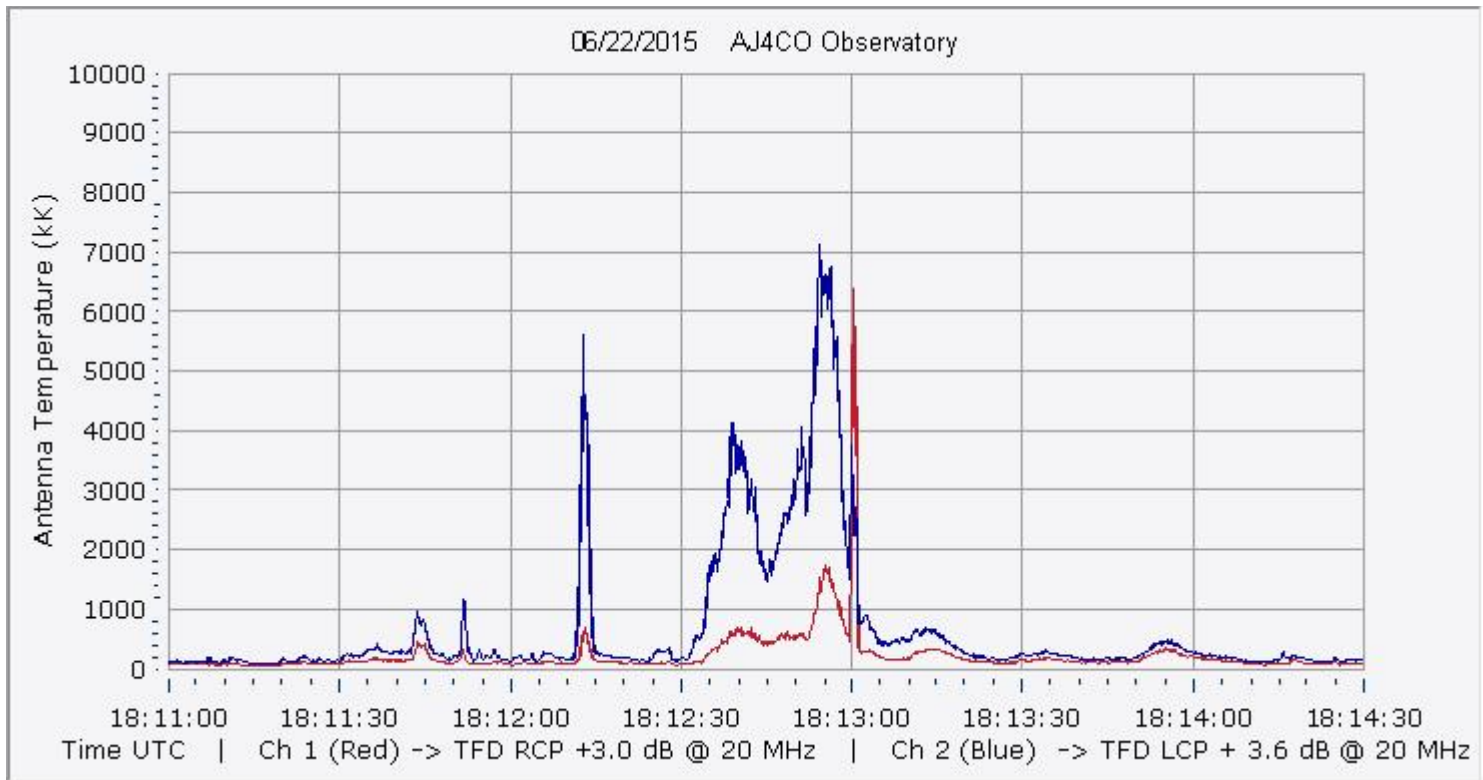
AJ4CO Observatory - 22 Jun 2015 - DPS 30 kHz IF on TFD Array in CP Mode - RCP MC +13 dB Correction Array 2014 12 18 B.csv Offset 2100 Gain 3.5



AJ4CO Observatory - 22 Jun 2015 - DPS 30 kHz IF on TFD Array in CP Mode - LCP MC +13 dB Correction Array 2014 12 18 B.csv Offset 2100 Gain 3.5

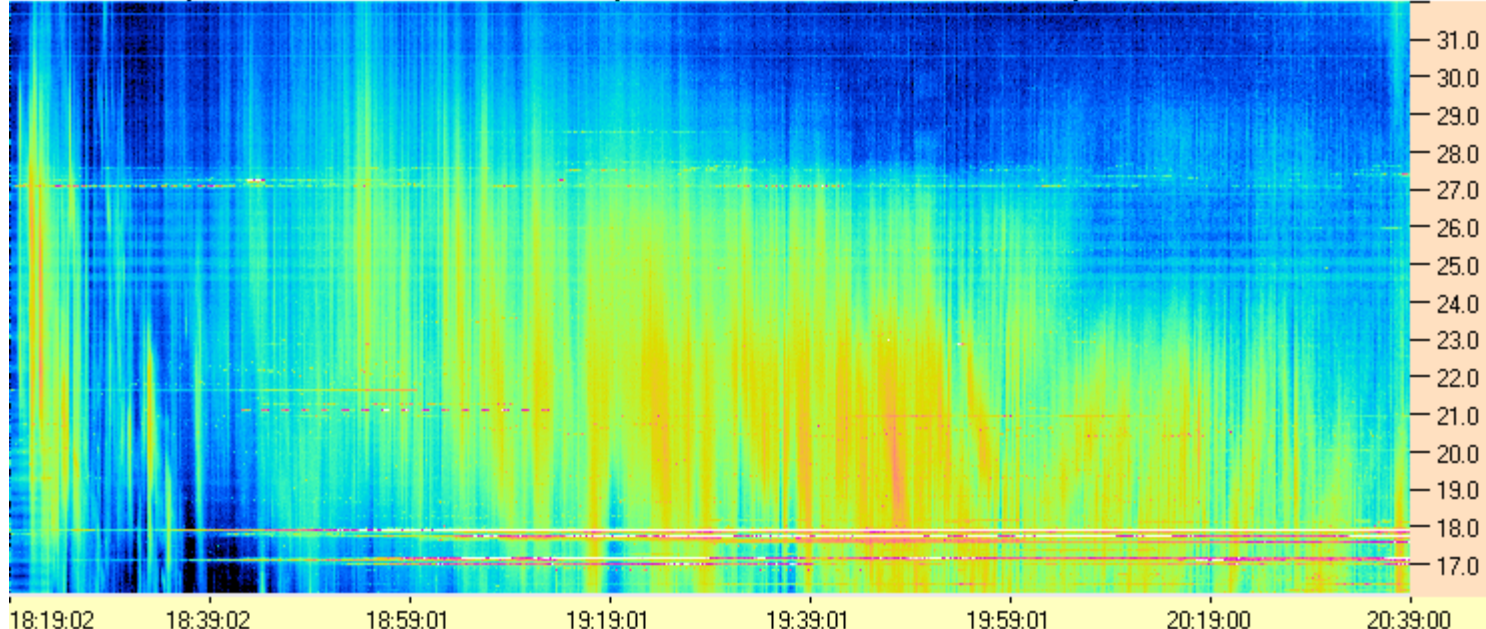




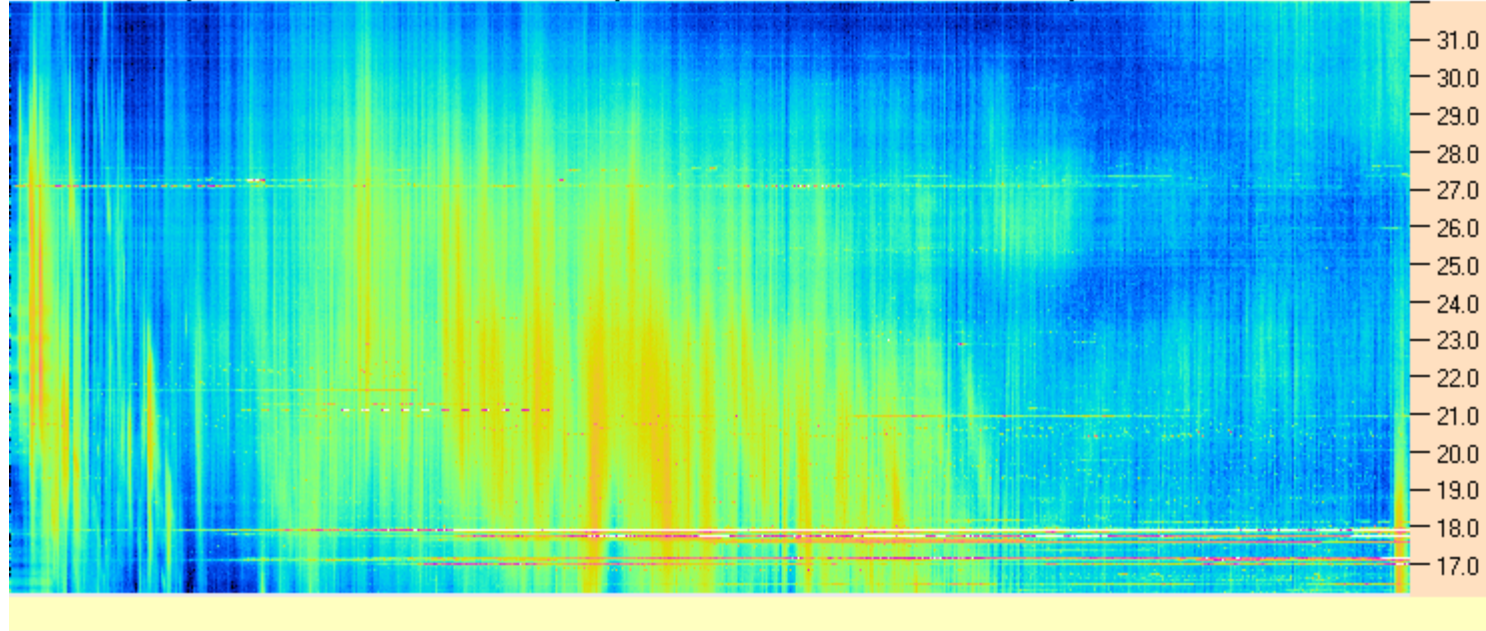


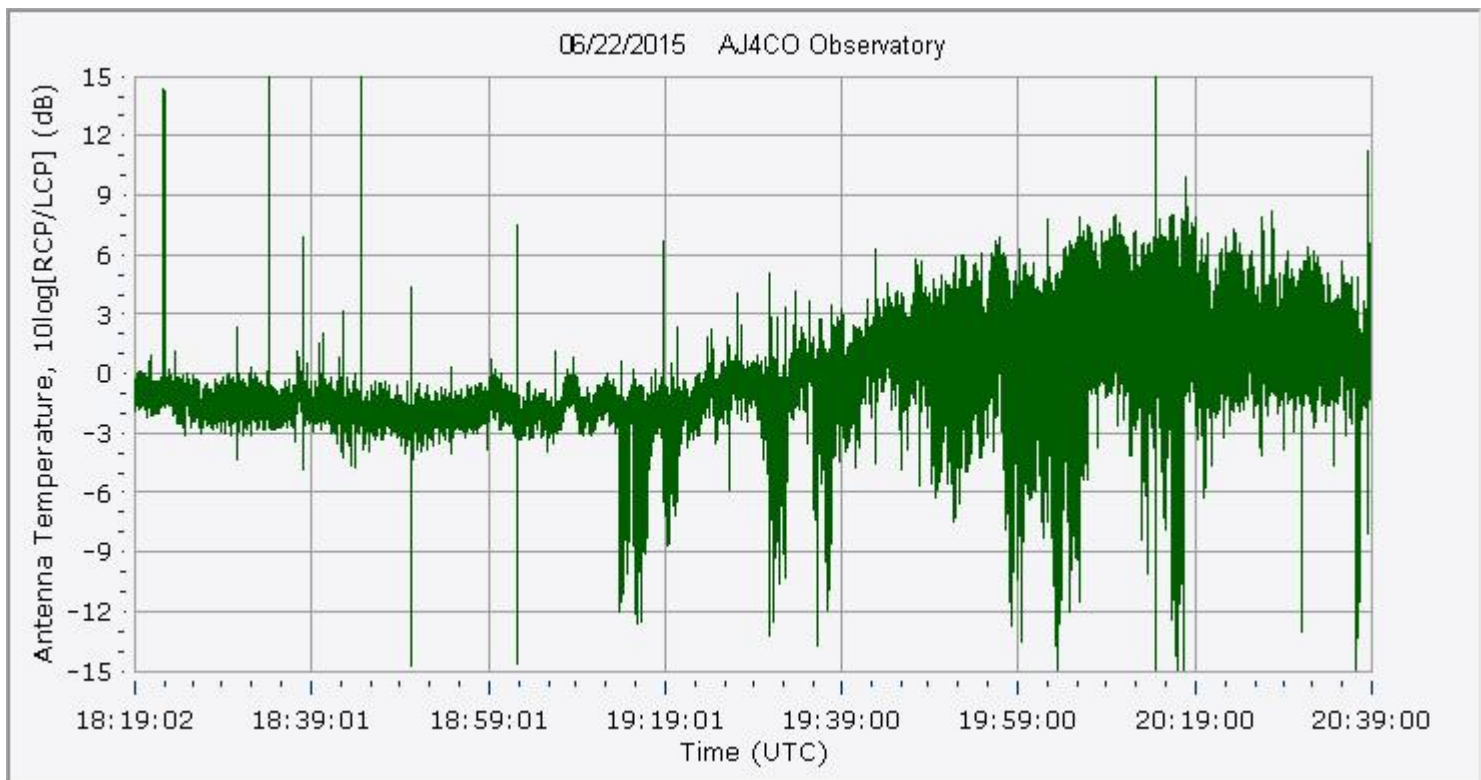
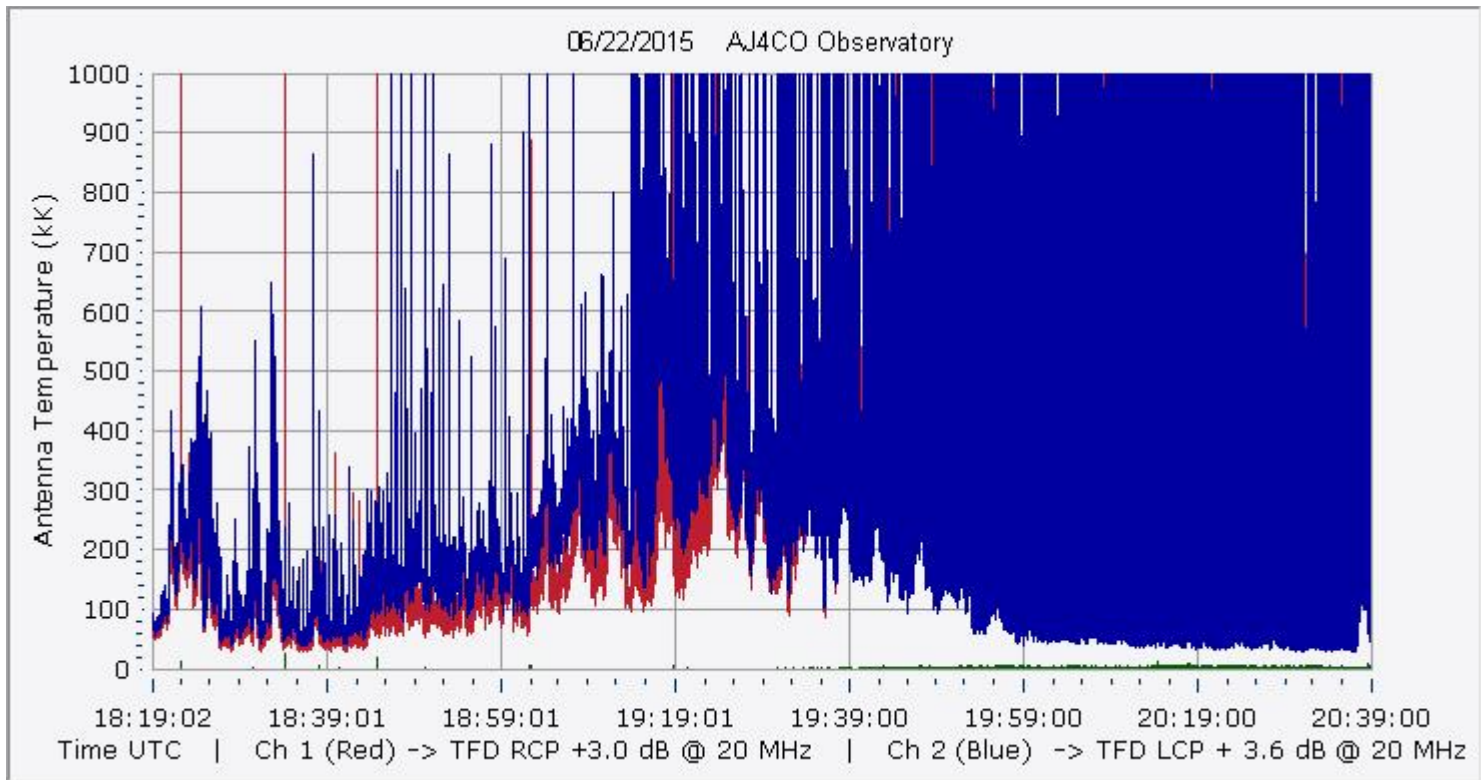


AJ4CO Observatory - 22 Jun 2015 - DPS 30 kHz IF on TFD Array in CP Mode - RCP MC +13 dB Correction Array 2014 12 18 B.csv Offset 2100 Gain 3.5



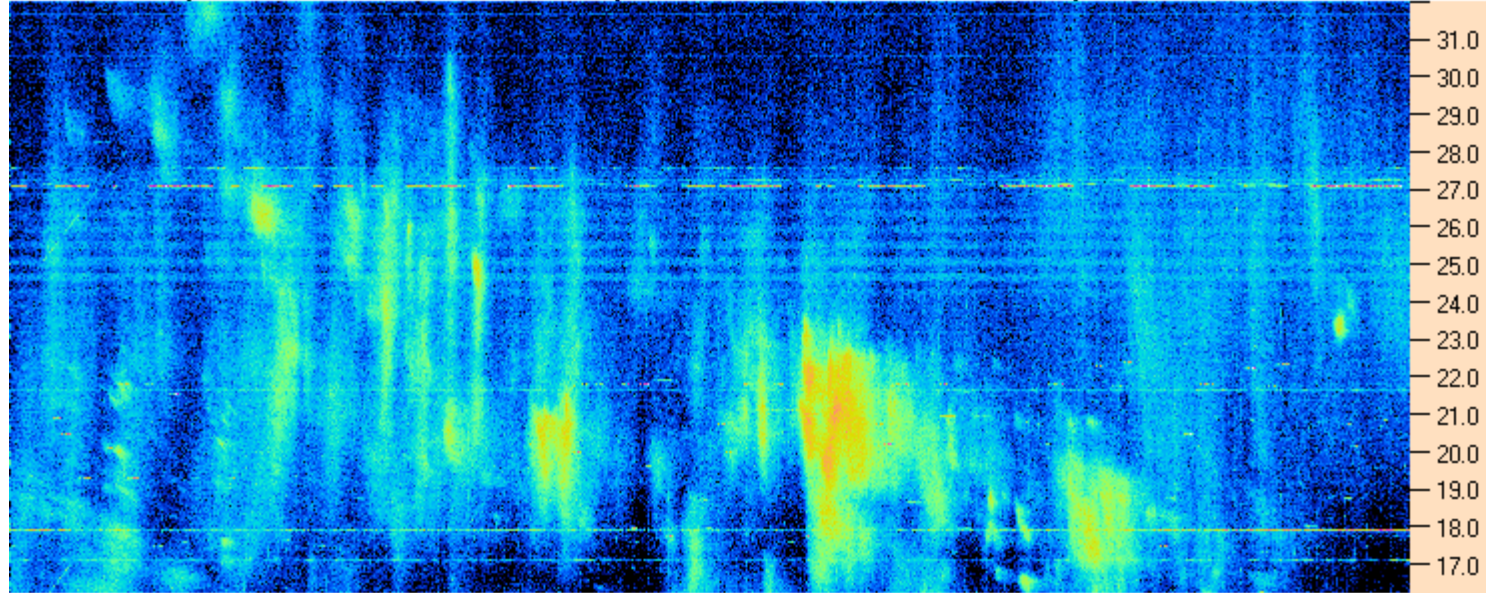
AJ4CO Observatory - 22 Jun 2015 - DPS 30 kHz IF on TFD Array in CP Mode - LCP MC +13 dB Correction Array 2014 12 18 B.csv Offset 2100 Gain 3.5





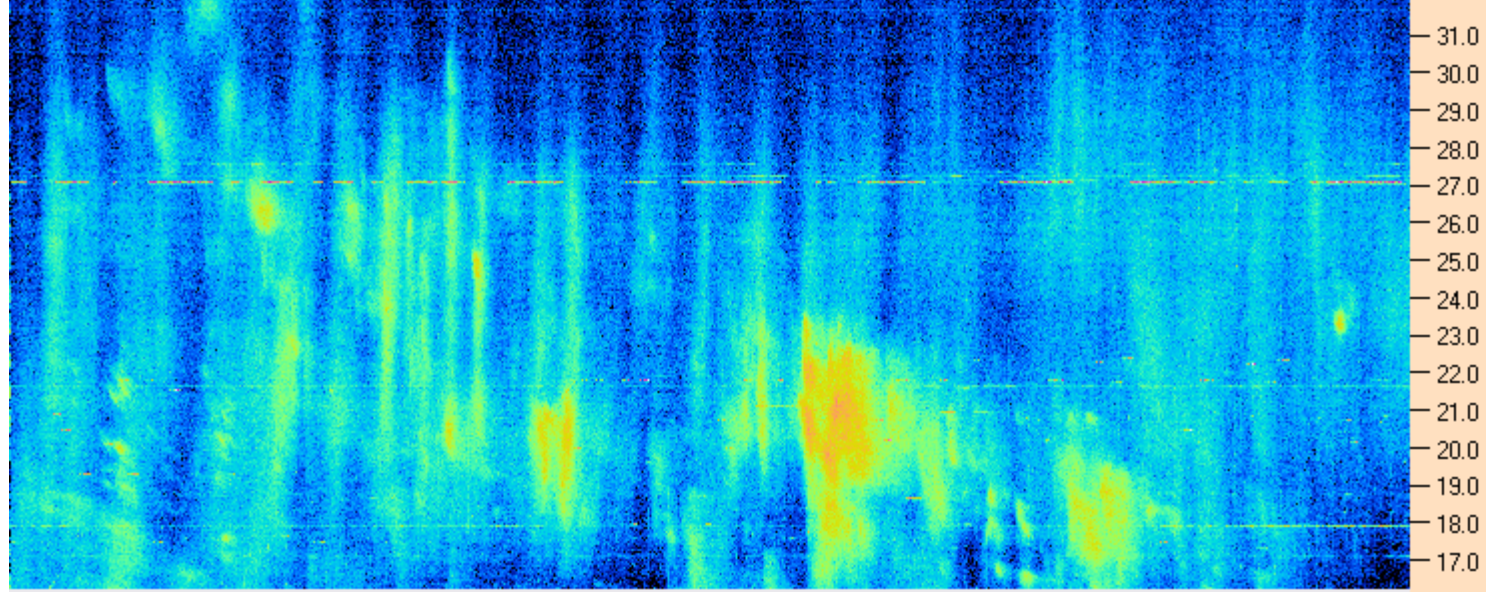


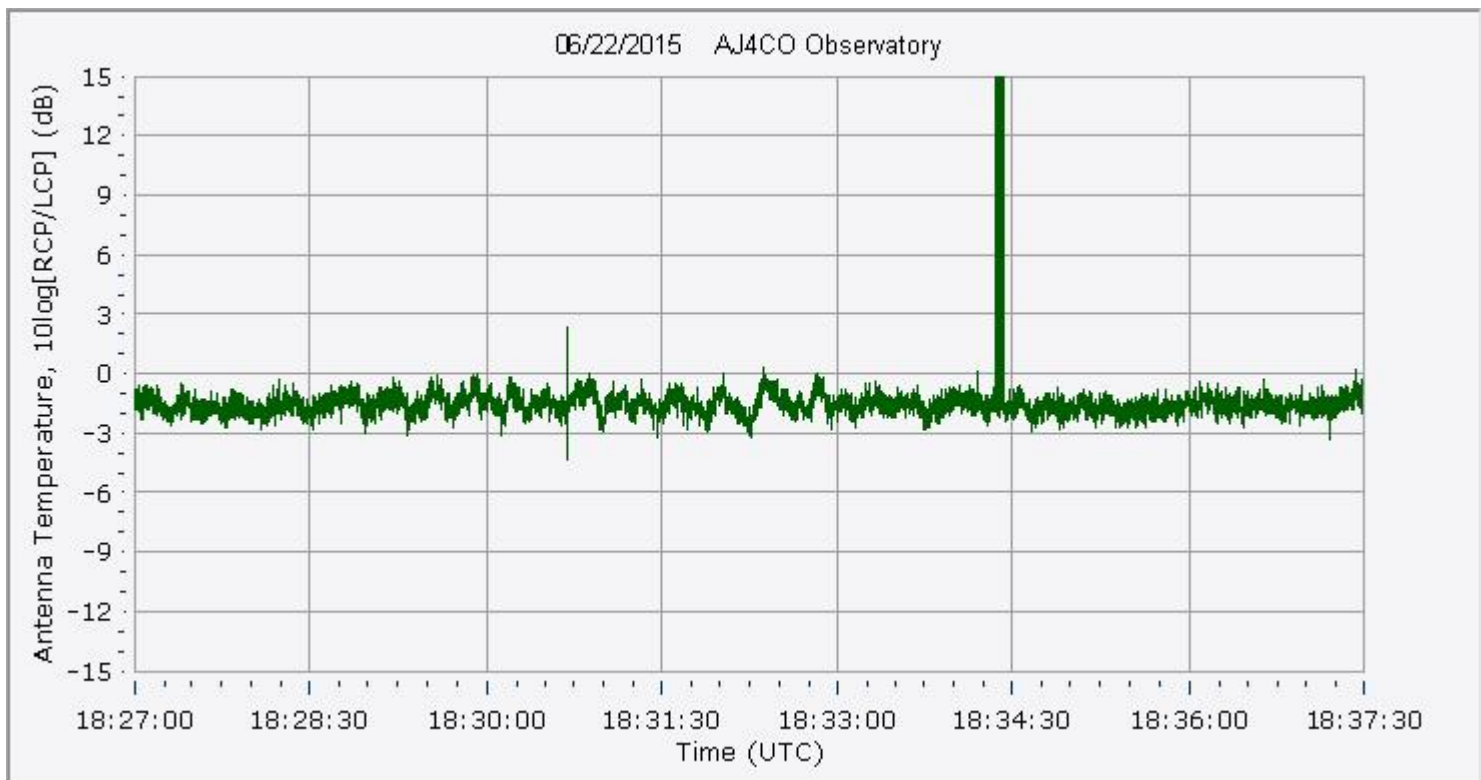
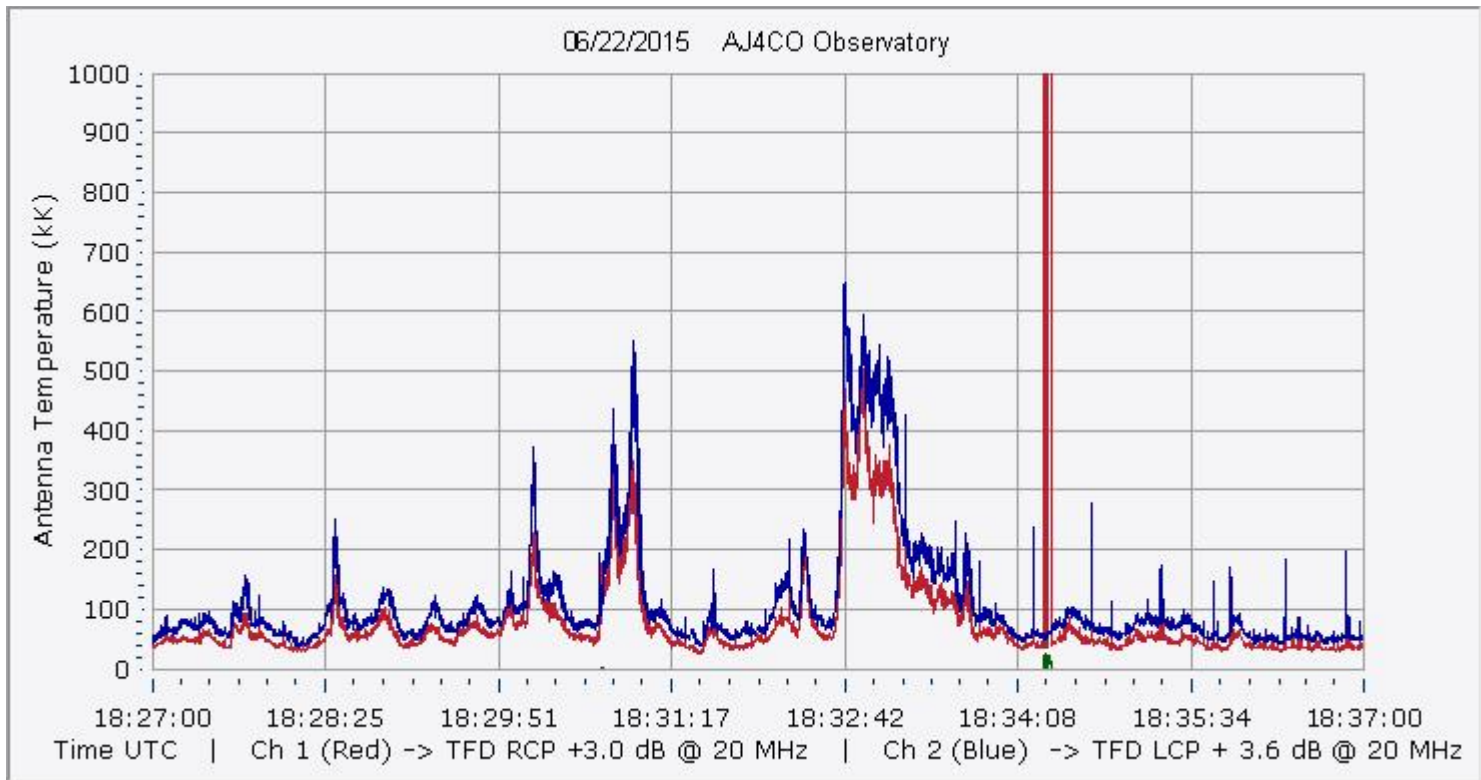
AJ4CO Observatory - 22 Jun 2015 - DPS 30 kHz IF on TFD Array in CP Mode - RCP MC +13 dB Correction Array 2014 12 18 B.csv Offset 2100 Gain 3.5



18:27:00 18:28:26 18:29:51 18:31:17 18:32:43 18:34:09 18:35:34 18:37:00

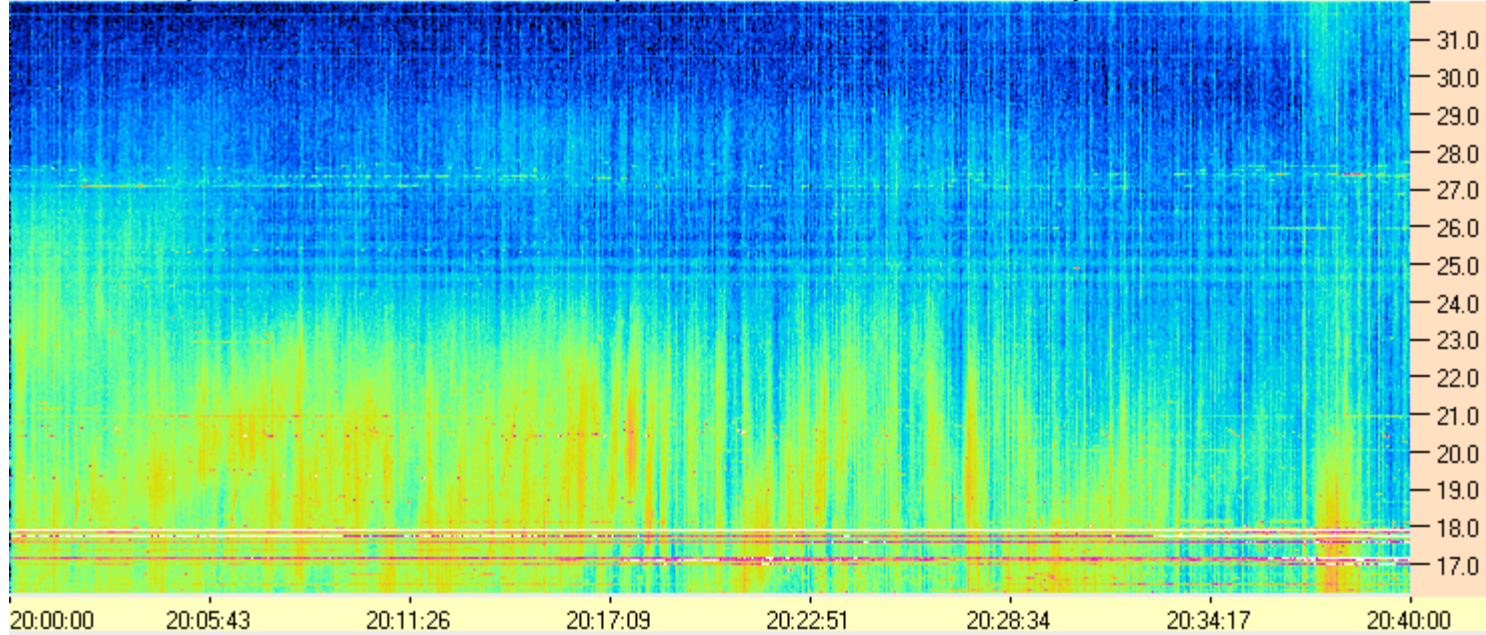
AJ4CO Observatory - 22 Jun 2015 - DPS 30 kHz IF on TFD Array in CP Mode - LCP MC +13 dB Correction Array 2014 12 18 B.csv Offset 2100 Gain 3.5







AJ4CO Observatory - 22 Jun 2015 - DPS 30 kHz IF on TFD Array in CP Mode - RCP MC +13 dB Correction Array 2014 12 18 B.csv Offset 2100 Gain 3.5



AJ4CO Observatory - 22 Jun 2015 - DPS 30 kHz IF on TFD Array in CP Mode - LCP MC +13 dB Correction Array 2014 12 18 B.csv Offset 2100 Gain 3.5

